

Alpha

Imaging Technologies

The Experts in Wide-Format Printing
www.alphaimaging.com



SOLVENT SUPPLIES CATALOG 2010

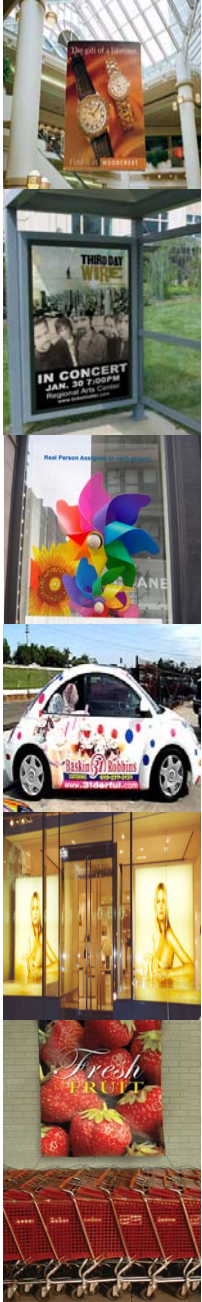


877-459-2050



Solvent Catalog

Table of Contents	DU Y
Alpha Imaging Introduction	3
3M	4
Alpha Value Line Media	7
Alpha Value Line PSA Laminates	10
Alpha Value Line Thermal Laminates and Mount	12
Aurora	14
Avery	17
Direct-Print Sublimation Fabric	21
EcoMedia	24
GBC	25
Glen Raven	35
Intelicoat	36
LG Chem	39
Neschen	44
Oracal	45
Oraguard laminates	48
Sihl	50
Ultraflex	51
Ultraflex Fabric	57
UV & Solvent Inks	58
Latex Media & Ink	61
Magnetic Vinyl	63
ValueVinyls	64
Terms&Conditions	65



Alpha Imaging Technologies is a national dealer for equipment and supplies from a variety of manufacturers. Our volumes have gained us premier dealer status with most of our vendors. Let us show you how this can translate into aggressive pricing for your company!

Alpha represents products from over 20 manufacturers including:

- Avery
- ColorSpan
- GBC
- Hewlett Packard
- Intelicoat
- Neschen
- Oce
- Oracal
- Seiko
- Ultraflex

In addition, our Alpha Value Line (AVL) product line is a private-labeled line of vinyl, laminate and mounting consumable items from industry-recognized manufacturers made available to Alpha to sell under our A.V.L name for more aggressive pricing than branded product will allow.

Orders are shipped from our fully stocked warehouse and next day delivery is typical. Provide Alpha with a forecast of the items you need to keep your business printing and we'll make arrangements to stock for you for guaranteed availability!

There are many options for you in terms of where you get your supply products but keep the following in mind about Alpha. Our commitment is not to sell you a roll of media and walk away. We want to make sure that your company is optimizing your supply products to get the best possible output. To do that, Alpha will support you with color profiling support and equipment service. (These services are available for a fee or at no charge to clients with substantial monthly supply volumes. Contact your Alpha sales representative to discuss this offer in detail.)

Specific volume pricing is also available offering deeper discounts than reflected in this price book. Allow Alpha Imaging Technologies an opportunity to create an offer exclusively for you so you can compare it to your current supplier.



Series IJ160C-10 Graphic Vinyl Control Tac with Comply

Roll Width"	Roll Length'
48	150
54	150
60	150

Series IJ3555 Changeable Graphic Film

Roll Width"	Roll Length'
54	150
60	150

Series IJ3650-10 Graphic Film white

Roll Width"	Roll Length'
48	150
54	150
60	150

Series IJ3650-114 Graphic Film transparent

Roll Width"	Roll Length'
48	150
54	150
60	150

Series IJ180C Cast Vinyl Control Tac with Comply

Roll Width"	Roll Length'
36	150
54	150
54	300
60	150

Series IJ180CV3 Cast Vinyl Control Tac with Comply

Roll Width"	Roll Length'
48	150
48	300
54	150
54	300
60	150
60	300

8519 Luster Overlamine 2ml Cast Luster Overlamine

Roll Width"	Roll Length'
36	150
54	150
54	300

8518 Gloss Overlamine 2ml Cast Gloss Overlamine

Roll Width"	Roll Length'
30	150
54	150

3662 Scotcal 2 mil durable, opaque film

Roll Width"	Roll Length'
48	150

3645 Scotcal Luster overlamine - use with floor graphics

Roll Width"	Roll Length'
36	150
48	150
54	150

3647 Scotcal Matte overlamine 19 mil clear - use with 3662-

Roll Width"	Roll Length'
48	150

30 Series- General Sign & Flat Transit
40 Series- Simple Curve & Transit Wrap

Series IJ35E -20R Polyolefin Removable- Matte Enviro 1 yr

Roll Width"	Roll Length'
54	150

Series IJ35-10 Promotional Permanent- Gloss 3 yr

Roll Width"	Roll Length'
54	150
54	300

Series IJ35-20 Promotional Permanent- Matte 3 yr

Roll Width"	Roll Length'
54	150
54	300

Scotchcal IJ3620 Changeable Matte Film No residue 1 yr

Roll Width"	Roll Length'
54	150
54	300

IJ40C-10R w Comply- Air release tech- Gloss - 5 yr - 3 mo flr

Roll Width"	Roll Length'
54	150
54	300

IJ40C-20R w Comply- Air release tech- Matte - 5 yr - 3mo flr

Roll Width"	Roll Length'
54	150
54	300

IJ46-20 Matte- Optimized for Bus Wraps- Ez remove w/o Heat
1yr

Roll Width"	Roll Length'
54	150
54	300

IJ63 Changeable Translucent - Short term backit - Matte - 1 yr

Roll Width"	Roll Length'
54	150
54	300

IJ66 3M Perforated Window Film 6 mo

Roll Width"	Roll Length'
54	164
54	328

IJ162 Clear Controltac Floorgraphic film

Roll Width"	Roll Length'
48	150
54	150

3648 Scotchcal High Gloss Overlamine- Int Floor 3 mo

Roll Width"	Roll Length'
54	150

8509 Luster Overlamine- 3 yr

Roll Width"	Roll Length'
54	150
61	150
54	300

8908 Luster Overlamine- Environmentally Friendly Polyolefin - 1 yr

Roll Width"	Roll Length'
54	300

8909 Matte Overlamine- Environmentally Friendly Polyolefin - 1 yr

Roll Width"	Roll Length'
54	300

Alpha Value Line (AVL)
AVL Banner Media for Solvent Printing

This product line contains a variety of private-labeled products made available to Alpha from industry-recognized manufacturers.

	Part Number	Roll Width"	Roll Length'
	13 OZ Blackout Scrim Printable on both sides (Herculite)		
*	AVLBSB74	74.5	150
*	AVLBSB54	54	75
*	AVLBSB37	37.5	75
	AVL Vinyl Media for Solvent Printing		
	WHITE TRANSLUCENT VINYL- 3.2 with Clear PERM ADHESIVE		
	Translucent film designed for producing backlit applications that last.		
*	AVLVTC62	62	150
	AVLVTC54	54	150
	AVLVTC30	30	150
	Clear Static Cling Vinyl		
*	AVLVCSC	50	75
*	207-54	54	75
	White Static Cling Vinyl		
*	AVLVWSC	50	75
*	208-54	54	75
	6ml Matte Rigid White Vinyl - Great for mounting-Does not stretch		
*	GV54106 Permanent Adhesive	54	100
*	GV54106R Removable Adhesive	54	100
	Improved 6ml Rigid White Vinyl - Great for mounting-Does not stretch		
	AVLV6M54100 Matte Permanent	54	100
	AVLV6MR54100 Matte Removable	54	100
	AVLV6MUR54150 Matte Ultra Rem	54	150
	AVLV6MUR30150 Matte Ultra Rem	30	150
	AVLV6G54100 Gloss Permanent	54	100
	AVLV6GR54100 Gloss Removable	54	100
	CALENDERED MATTE WHITE VINYL- 3.2mil Clear Perm Adhesive		
*	AVLVM62	62	150
*	AVLVM54	54	150
	AVLVM36	38	150
	AVLVM30	30	150
	14 mil Gloss White Rigid Vinyl		
	Designed for trade show panels and POP graphics. Gloss white finish makes graphics pop		
	AVLBRW1438	38	75
	AVLBRW1450	50	75
	PSA 3.2 mil Gloss White Vinyl - Air Release liner		
	with gray permanent adhesive		
	AVLGAR54	54	150
	AVLGAR30	30	150
	14 mil Translucent White Rigid Vinyl		
	Great for backlit trade show headers and light boxes		
	AVLBRT1438	38	75
	AVLBRT1450	50	75
	White Removable Vinyl Gloss		
*	AVLHG54R	54	150
	PSA 3.2 mil Gloss White Vinyl		
	with clear permanent adhesive		
	AVLVG62150	62	150
	AVLVG54150	54	150
	AVLVG48150	48	150
	AVLVG30150	30	150
	PSA 3.2 mil Gloss White Vinyl - tinted		
	with black tinted permanent adhesive		
	AVLVGT62150	62	150
	AVLVGT54150	54	150
	AVLVGT38150	38	150
	AVLVGT30150	30	150
	PSA 3.2 mil Gloss White Vinyl - tinted		
	with black tinted removeable adhesive		
	AVLVGTR62150	62	150
	AVLVGTR54150	54	150
	AVLVGTR38150	38	150
	AVLVGTR30150	30	150
	PSA 3.2 Matte White Vinyl		
	with clear permanent adhesive		
	AVLVM62150	62	150
	AVLVM54150	54	150
	AVLVM38150	38	150
	AVLVM30150	30	150

Alpha Value Line (AVL)
AVL Vinyl Media for Solvent Printing (continued)

Part Number	Roll Width	Roll Length
PSA 3.0 mil metalized PVC		
available in three finishes		
AVLVMTLSG48 (smooth gold)	48	75
AVLVMTLSS48 (smooth silver)	48	75
AVLVMTLDP48 (diamond plate)	48	75
PSA 3.2 mil Matte White Vinyl - tinted		
with black tinted permanent adhesive		
AVLVMT62150	62	150
AVLVMT54150	54	150
AVLVMT38150	38	150
AVLVMT30150	30	150
PSA 3.2 mil Matte White Vinyl - tinted		
with black tinted removeable adhesive		
AVLVMT62150	62	150
AVLVMT54150	54	150
AVLVMT38150	38	150
AVLVMT30150	30	150
PSA 3.5 mil Transit Vinyl - opaque		
Matte White Vinyl with clear removable adhesive		
AVLVOM54150	54	150
PSA 3.2 Gloss Clear Vinyl		
with clear permanent adhesive		
AVLVC62150	62	150
AVLVC54150	54	150
AVLVC38150	38	150
AVLVC30150	30	150
PSA 3.2 Gloss Clear Vinyl		
with clear removable adhesive		
AVLVCR62150	62	150
AVLVCR54150	54	150
AVLVCR38150	38	150
AVLVCR30150	30	150
PSA 6 White Reflective Vinyl		
with clear permanent adhesive		
AVLVRW48150	48	150
AVLVRW30150	30	150

Alpha Value Line (AVL)
AVLWindow Perf Media for Solvent Printing

Part Number	Roll Width"	Roll Length'
PERFORATED WINDOW FILM-Clear Focus 50-50		
* AVLWF54	54	100
AVLWF54PSI	54	100
AVLWF36	36	100
POSTERVUE WINDOW FILM - NO ADHESIVE		
AVLWFP54	54	100
PERFORATED WINDOW FILM-Clear Focus 65-35 Not for vehicles!		
AVLIV54	60	100
* AVLIV54	54	100
EconoVue WINDOW FILM-Clear Focus 60-40 Short term, up to 90 days		
AVLWFE54	54	100
AVLWFE54250-P	54	250
LAMINATE FOR WINDOW FILM- 1 MIL POLYESTER High Gloss. Great for One way window graphics on FLAT surfaces		
* AVLLW54	54	100
AVLLW36	36	100
LAMINATE FOR WINDOW FILM- 2 MIL GLOSS CAST LAMINATE W/POLYESTER LINER Premium protection for all images including vehicles. Designed for use with one way window graphics that are applied to curved surfaces		
AVLLW254	54	150
AVLLW238	38	150

AVL Canvas Media for Solvent Printing

Part Number	Roll Width"	Roll Length'
Satin Polyblend Canvas		
* AVLCSS54	54	60
AVLCSS36	36	60
* AVLCSS30	30	60

AVL Paper Media for Solvent Printing

Part Number	Roll Width	Roll Length
180 gram Matte Paper		
AVLPM54150	54	150
AVLPM36150	36	150
AVLPM30150	30	150
Part Number	Roll Width	Roll Length
PSA 180 gram Matte Paper		
AVLPMP54150	54	100
AVLPMP36150	36	100
AVLPMP30150	30	100

Alpha Value Line (AVL)

Alpha Value Line Pressure Sensitive Laminates & Mounts

This product line contains a variety of private-labeled products made available to Alpha from industry-recognized manufacturers.

Part Number	Roll Width"	Roll Length'
3.2 mil Gloss Calendered UV PSA Laminate		
AVLLG61	61	150
AVLLG54	54	150
AVLLG51	51	150
AVLLG43	43	150
AVLLG38	38	150
AVLLG30	30	150
AVLLG25	25	150
3.2 mil Matte Calendered UV PSA Laminate		
AVLLM61	61	150
AVLLM54	54	150
AVLLM51	51	150
AVLLM43	43	150
AVLLM38	38	150
AVLLM30	30	150
AVLLM25	25	150
3.2 mil Satin Calendered UV PSA Laminate		
AVLLS61	61	150
AVLLS54	54	150
AVLLS51	51	150
AVLLS43	43	150
AVLLS38	38	150
AVLLS30	30	150
AVLLS25	25	150
3.2 mil Luster Calendered UV PSA Laminate		
AVLLL61	61	150
AVLLL54	54	150
AVLLL51	51	150
AVLLL43	43	150
AVLLL38	38	150
AVLLL30	30	150
AVLLL25	25	150
5mil PSA Embossed Vinyl - Simulates Polycarb! - Indoor Only		
AVLLEV561	61	150
AVLLEV554	54	150
AVLLEV551	51	150
AVLLEV538	38	150
AVLLEV530	30	150
10mil PSA Embossed Vinyl - Simulates Polycarb! - Indoor Only		
AVLLEV1061x75	61	75
AVLLEV1054	54	150
AVLLEV1054x75	54	75
AVLLEV1051	51	150
AVLLEV1051x75	51	75
AVLLEV1038	38	150
AVLLEV1038x75	38	75
AVLLEV1030x75	30	75
1mil PSA Tedlar UV "Anti-Graffiti Laminate		
AVLLAG54	54	150
AVLLAG51	51	150
AVLLAG38	38	150
1mil PSA Clear Dry Erase Laminate		
AVLLDE54	54	150
AVLLDE51	51	150
AVLLDE38	38	150
3.75mil PSA Floor Laminate		
AVLLFL54	54	150
Release Liner		
AVLLRL61	61	450
AVLLRL51	51	450
AVLLRL54	54	450
AVLLRL38	38	450

Alpha Value Line (AVL)

Alpha Value Line Pressure Sensitive Laminates & Mounts

This product line contains a variety of private-labeled products made available to Alpha from industry-recognized manufacturers.

Part Number	Roll Width"	Roll Length'
Alpha Value Line Pressure Sensitive Laminates & Mounts (continued)		
5mil PSA Velvet Polycarbonate		
AVLLPC5-51	51	150
AVLLPC5-38	38	150
10mil PSA Velvet Polycarbonate		
AVLLPC10-51	51	150
AVLLPC10-38	38	150
15mil PSA Velvet Polycarbonate		
AVLLPC15-51150	51	150
AVLLPC15-51	51	75
AVLLPC15-38150	38	150
AVLLPC15-38	38	75

PSA Mounting Films

ECONOMY MOUNT		
SMT51300	51	300
SMT51150	51	150
SMT38150	38	150
White Permanent		
AVLMW60	60.25	164
AVLMW51	51	164
AVLMW43	43	164
AVLMW38	38	164
Clear Permanent		
AVLMC60	60.25	164
AVLMC51	51	164
AVLMC43	43	164
AVLMC38	38	164
Optically Clear Perm/Perm		
AVLMOC60	60.25	164
AVLMOC51	51	164
AVLMOC38	38	164
Optically Clear Perm/Rem		
AVLMOCPR60	60.25	164
AVLMOCPR51	51	164
AVLMOCPR38	38	164

PSA "Cold" Backers

10ml Matte White Semi-Rigid Backer		
Ideal for trade show graphics the need to be rolled for transport		
AVLRBW10M-51	51	150
AVLRBW10M-38	38	150
10ml Gloss White Rigid Vinyl Backer		
Ideal for trade show graphics the need to be rolled for transport		
Gloss finish makes colors pop on printed clear media		
AVLRBW10G-51	51	75
AVLRBW10G-38	38	75
10ml Translucent Rigid Vinyl Backer		
Use as stiffner for backlit and printable clear polycarbonate.		
AVLRBW10T-51	51	75
AVLRBW10T-38	38	75



**Alpha Value Line (AVL) Thermal Laminates & Mounts
Thermal Low-Temp UV Polyester Laminates**

Part Number	Roll Width"	Roll Length'
THERMAL LOW TEMP. UV POLYESTER 3 MIL GLOSS 1/2		
★ DLLG338	38	200
★ DLLG351	51	200
DLLG355	55	200
★ DLLG361	61	200
THERMAL LOW TEMP. UV POLYESTER 3 MIL LUSTER (.5/2.5)		
★ DLLL338	38	200
★ DLLL351	51	200
DLLL355	55	200
★ DLLL361	61	200
THERMAL LOW TEMP. UV POLYESTER 3 MIL MATTE (.5/2.5)		
★ DLLM338	38	200
DLLM351	51	200
DLLM355	55	200
DLLM361	61	200
THERMAL LOW TEMP. UV POLYESTER 5 MIL GLOSS 2/3		
★ DLLG538	38	200
★ DLLG551	51	200
DLLG555	55	200
DLLG561	61	200
THERMAL LOW TEMP. UV POLYESTER 5 MIL LUSTER 3/2		
★ DLLL538	38	200
★ DLLL551	51	200
DLLL555	55	200
DLLL561	61	200
THERMAL LOW TEMP. UV POLYESTER 5 MIL MATTE 3/2		
DLLM538	38	200
DLLM551	51	200
DLLM555	55	200
DLLM561	61	200
THERMAL LOW TEMP. UV POLYESTER 10 MIL GLOSS 7/3		
DLLG257	25	250
DLLG337	33	250
DLLG387	38	250
DLLG437	43	250
DLLG517	51	250
DLLG557	55	250

Pressure Sensitive Mounting Adhesives:

	Part Number	Roll Width"	Roll Length'
	GENERAL PURPOSE MOUNTING (Solvent Rubber) ADHESIVE		
★	DMG38	38	200
	DMG41	41	200
	DMG414	41	400
★	DMG43	43	200
	DMG434	43	400
★	DMG51	51	200
	DMG61	61	200
	ECONOMY MOUNTING ADHESIVE: (Solvent Rubber)		
	DME38	38	200
	DME41	41	150
	DME43	43	200
	DME51	51	150
	DME513	51	300
	DME61	61	200
	GRAPHIC WALL MICROSPHERE MOUNTING ADHESIVE (permanent/repositionable)		
	MWA54150	54	150
	MWA54200	54	200



Solvent and UV Printable Fabrics

VC 1122 – A light weight 100% cotton fabric with our print receptive polymer coating. The embossed surface creates a soft canvas-like texture with superb drape. 9 mils thick and 4.5oz/sq yd.

Roll Width "	x	Roll Length '
48	x	150

VC 2611 – An ultra light, tightly constructed, 100% cotton fabric with our print receptive polymer coating. Linen-like soft hand with excellent drape. 6.5mils thick and 3.5oz/sq yd.

Roll Width "	x	Roll Length '
56	x	150

VC Spunbond–A durable 100% polyester nonwoven substrate and our print receptive polymer coating provide a strong yet economical fabric with a surface like fine art paper. Suitable for indoor or outdoor use. 12 mils thick and 4oz/sq yd.

Roll Width "	x	Roll Length '
56	x	150
76	x	150

VC Poly Woven 4oz – A light weight 100% polyester fabric with our print receptive polymer coating gives a sheer elegant look to any display or backdrop. Suitable for indoor or outdoor use. 6 mils thick and 4oz/sq yd.

Roll Width "	x	Roll Length '
61	x	150

VC Poly Woven 8oz – A rugged 100% polyester base fabric with our printable polymer coating creates a uniform, canvas-like surface. Use indoors or outdoors. 13.5 mils thick and 8oz/sq yd.

Roll Width "	x	Roll Length '
61	x	150

VC Poly Oxford – A classic oxford weave in 100% polyester with our printable polymer coating. Soft hand and excellent drape. Use indoors or outdoors. 14.5 mils thick and 8oz/sq yd.

Roll Width "	x	Roll Length '
54	x	150

Solvent and UV Printable Fabrics (cont'd)

VC Cotton Canvas Natural – An unbleached 100% cotton canvas with a clear, flexible print receptive coating provides a rustic, old world look and feel. Can also be litho printed and is suitable for stretching and framing. 20 mils thick and 8oz/sq yd.

Roll Width "	x	Roll Length '
56	x	150
76	x	150

VC Canvas – Our original poly-cotton canvas with our print receptive polymer coating. Has the look of artist's canvas with a much softer hand and better drape. Suitable for stretching and framing. 20 mils thick and 9oz/sq yard.

Roll Width "	x	Roll Length '
56	x	150
76	x	150

VC Canvas 2-Side White – Built upon our VC Canvas this canvas is coated on both sides for increased opacity and 2 side printing.

Roll Width "	x	Roll Length '
56	x	150
76	x	150

AC Canvas – Our original poly-cotton canvas with a traditional acrylic "gesso" coating. A true artist's canvas for solvent or UV digital printing. 11 mils thick and 11oz/sq yd.

Roll Width "	x	Roll Length '
56	x	150
76	x	150

Trio Litho Canvas – Designed for litho printing but this bright white glossy canvas prints beautifully via solvent or UV digital. Multi-layer coatings front and back provide a uniform surface texture and sheet stability. 18 mils thick and 13oz/sq yd.

Roll Width "	x	Roll Length '
56	x	150

Aurora 14 Litho Canvas – A lighter weight and more flexible version of our Trio Litho Canvas with a smoother surface texture.

Roll Width "	x	Roll Length '
56	x	150

Aurora 2 Sided Litho – Coated on both sides with a traditional acrylic "gesso" coating. Matte surface provides an authentic artist's canvas look. Treated to meet the NFPA 701 flammability standard. 17 mils thick and 10.5 oz/sqyd UV print only.

Roll Width "	x	Roll Length '
56	x	150

Decoprint Fabrics

Theater – A 100% polyester woven fabric with a block out layer for complete opacity. Coated on one side for solvent and UV inkjet printing. Compatible with transfer dye sub printing on the uncoated side. The soft hand and easy drape make it a good choice for POP, trade show display, roll up banner stands and other applications. Meets NFPA 701 and other flammability standards. 8.6 mils thick and 8.5oz/sq yd.

Roll Width "		Roll Length '
61	x	165
122	x	165

Stretch – The cross direction stretch and recovery of this woven fabric makes it a great choice for trade show display and POP applications. Compatible with solvent inks. 16.5 mils thick and 5.5oz/sq yd.

Roll Width "		Roll Length '
59	x	165
118	x	165

Silver – The silver metallic finish gives this fabric a unique look and feel. Compatible with solvent and UV digital printing. Perfect for that high-end look in POP applications. Meets NFPA 701 and other flammability standards. 12 mils thick and 7.4oz/sq yd.

Roll Width "		Roll Length '
61	x	165
122	x	165

Bi-Night – A rich, supple feeling, opaque fabric with excellent drape characteristics. Coated on both sides for solvent or UV printing. Perfect for 2 side print applications. Meets NFPA 701 and other flammability standards. 15 mils thick and 9.5oz/sq yd.

Roll Width "		Roll Length '
61	x	165
122	x	165

Pearl – This unique material is just as luxurious as its name. Solvent and UV compatible on the coated side and dye-sub transfer compatible on the uncoated side. The translucency of Pearl is perfect for lighted displays, reflective or backlit. Meets NFPA 701 and other flammability standards. 5 mils thick and 4oz/sq yd.

Roll Width "		Roll Length '
61	x	165
122	x	165



Multi-Purpose Inkjet (MPI)	Adhesive	Liner	Item #	Width inch	Length ft	Core Size*
MPI 1020 Cast Clear	Perm	100# TB	3246	60	300	3"
			3261	60	150	3"
			4487	48	300	3"
			3395	48	150	3"
			3021	48	45	3"
MPI 1005 Cast White	Perm/Repo	100# TB	3087	60	150	3"
			3272	54	300	3"
			3441	54	150	3"
			3276	48	300	3"
			3442	48	150	3"
			3088	36	150	3"
MPI 1005 Cast White	Perm/Repo	90#	3513	60	150	3"
			3511	54	150	3"
MPI 1005 EZ Cast White	Perm/Repo	90#	3284N	60	300	3"
			3144N	60	150	3"
			3077N	54	300	3"
			3164N	54	150	3"
			5350	54	75	3"
			3282N	48	300	3"
			3443N	48	150	3"
			41001	30	150	3"
MPI 1005 EZ RS Cast White	Perm/Repo	90#	5336	60	300	3"
			5337	60	150	3"
			5334	54	300	3"
			5332	54	150	3"
			5349	54	75	3"
			5329	48	300	3"
			5328	48	150	3"
			41002	30	150	3"
MPI 1007 Cast White	Perm/Repo	90#	3525	54	150	3"
MPI 1007 EZ Satin Cast White	Perm/Repo	90#	3325N	54	150	3"
			3326N	54	45	3"
MPI 1007 EZ RS Satin Cast White	Perm/Repo	90#	5339	54	150	3"
			5351	54	75	3"
MPI 1010 Cast White Scitex Vision Drum Machines	Perm/Repo	100# TB	3240	60	300	6"
			41003	48	750	6"
			3226	48	300	6"
MPI 1800 EZ Glossy Cast	Perm	90#	5387	60	150	3"
			5388	54	150	3"
MPI 2003 EZ	Perm/Repo	90#	3342N	60	150	3"
			3340N	54	150	3"
			5353	54	75	3"
			3338N	48	150	3"
MPI 2003 EZ RS	Perm/ Repo	90#	5322	60	150	3"
			5327	54	150	3"
			5352	54	75	3"
			5324	48	150	3"
			41004	30	150	3"
MPI 2010 Calendered White	Perm	90#	4446	60	300	3"
			3145	60	150	3"
			3085	54	300	3"
			3165	54	150	3"
			4445	48	300	3"
			3444	48	150	3"
			41031	30	150	3"
MPI 2012 Calendered White	Rem	90#	3244	60	300	3"
			3146	60	150	3"
			3243	48	300	3"
			3166	54	150	3"
			41005	30	150	3"

Digital Print Media						
Multi-Purpose Inkjet (MPI), cont	Adhesive	Liner	Item #	Width inch	Length ft	Core Size*
MPI 2021 Calendered Clear	Ultra Rem	90#	4447	54	300	3"
			3430	54	150	3"
MPI 2150 Calendered Translucent	Perm	90#	5513	60	150	3"
			5512	54	150	3"
			5514	54	75	3"
MPI 2601 Calendered Wall Film	Rem	70#	5509	54	150	3"
			5510	54	75	3"
MPI 3000 Calendered White	Perm	90#	3492	60	300	3
			3147	60	150	3"
			3219	54	750	3"
			3220	54	300	3"
			3167	54	150	3"
			41006	30	150	3"
MPI 3001 Calendered White	Rem	90#	3148	60	150	3"
			3221	54	750	3"
			3222	54	300	3"
			3168	54	150	3"
			41007	30	150	3"
MPI 3003 Opaque Cover-up Vinyl	Perm	90#	3275	60	150	3"
			41036	54	150	3"
			3273	48	150	3"
			41008	30	150	3"
MPI 3100 Gloss Calendered	Perm	90#	3370	60	150	3"
			3369	54	300	3"
			3367	54	150	3"
			3440	48	150	3"
			3520	30	150	3"
MPI 3101 Gloss Calendered	Rem	90#	3493	60	150	3"
			3494	54	150	3"
			41009	30	150	3"
MPI 3103 Gloss Calendered	Perm	90#	3571	60	150	3"
			3577	54	150	3"
			41010	30	150	3"
MPI 3900 Matte Calendered Promotional	Perm	70#	5522	60	150	3"
			5520	54	300	3"
			5519	54	150	3"
			5521	30	150	3"
MPI 3910 Gloss Calendered Promotional	Perm	70#	5518	60	150	3"
			5516	54	300	3"
			5515	54	150	3"
			5517	30	150	3"
MPI 5110 Silver Ultra Metallic	Perm	78#	3514	48	75	3"
MPI 5120 White Ultra Metallic	Perm	78#	3515	48	75	3"
MPI 5130 White Pearlescent	Perm	78#	3517	48	75	3"
MPI 5140 Etchmark	Perm	78#	3518	48	75	3"
MPI 3401 Semi-Translucent	Rem	70#	3249	60	150	3"
			41011	30	150	3"
MPI 3402 Opaque	Rem	70#	3251	60	150	3"
			41013	54	150	3"
			41012	30	150	3"
MPI Transit Vinyl	Rem	90#	3356	62	750	3"
			3355	62	300	3"
			3357	62	150	3"
			3119	60	300	3"
			3354	54	750	3"
			5452	54	150	3"
			3353	48	300	3"
			41014	30	150	3"
MPI Premium Reflective	Perm	100#	5384	48	150	3"
			5385	48	75	3"
			41016	48	30	3"
MPI 4002 Perforated Window Film	Perm	90#	3098	54	300	3"
			3366	54	75	3"
			4549	48	300	3"
			3365	48	75	3"
MPI 4065 Perforated Window Film	Perm	90#	3582	54	300	3"
			3580	54	75	3"
MPI 6250 Perforated Window Film	Perm	90#	3687	54	300	3"
			3686	54	75	3"

EZ RS Wrapping Films

Colors	Adhesive	Liner	Item #	Width inch	Length ft	Core Size
Easy Apply RS Wrap Film - Black	Perm/ Repo	90#	5417	60	150	3"
Easy Apply RS Wrap Film - Canary Yellow	Perm/ Repo	90#	5418	60	150	3"
Easy Apply RS Wrap Film - Dark Red	Perm/ Repo	90#	5419	60	150	3"
Easy Apply RS Wrap Film - Tomato Red	Perm/ Repo	90#	5420	60	150	3"
Easy Apply RS Wrap Film - Sapphire Blue	Perm/ Repo	90#	5421	60	150	3"
Easy Apply RS Wrap Film - Forest Green	Perm/ Repo	90#	5422	60	150	3"

Digital Print Media for Oce' Arizona

Multi-Purpose Inkjet (MPI)	Adhesive	Liner	Item #	Width inch	Length ft	Core Size
MPI 1005 Cast White for Arizona 180	Perm/Repo	90#	3241	54	150	3" - R
MPI 1005 EZ Cast White	Perm/Repo	90#	3283N	54	150	3" - R
			3066N	54	45	3" - R
MPI 1005 EZ RS Cast White	Perm/Repo	90#	5333	54	150	3" - R
			5335	54	45	3" - R
MPI 1007 EZ Satin Cast White	Perm/Repo	90#	3323N	54	150	3" - R
			3324N	54	45	3" - R
MPI 1007 EZ RS Satin Cast White	Perm/Repo	90#	5340	54	150	3" - R
			5342	54	45	3" - R
MPI 2003 EZ	Perm/Repo	90#	3341N	54	150	3" - R
MPI 2003 EZ RS	Perm/ Repo	90#	5323	54	150	3" - R
MPI 2010 Calendered White	Perm	90#	3000	54	150	3" - R
			3067	54	45	3" - R
MPI 2012 Calendered White	Rem	90#	3245	54	150	3" - R
MPI 3000 Calendered White	Perm	90# Blank	3173	54	150	3" - R
			3069	54	45	3" - R
MPI 3001 Calendered White	Rem	90# Blank	3176	54	150	3" - R
MPI 3003 Opaque Cover-Up Vinyl	Perm	70#	3274	54	150	3" - R
MPI 3100 Gloss Calendered White	Perm	70#	3368	54	150	3" - R
MPI 3101 Gloss Calendered	Rem	70#	3495	54	150	3" - R
MPI 3103 Gloss Calendered	Perm	70#	3578	54	150	3" - R
MPI 3401 Semi-Translucent	Rem	70#	3002	54	150	3" - R
MPI Transit Vinyl	Rem	90#	41015	54	150	3" - R

* = 3" - R is for 3" notched cores, reverse wound for use on Arizona 180 machines

Digital Print Media						
Digital Overlaminate (DOL)	Adhesive	Liner	Item #	Width inch	Length ft	Core Size
DOL 1000 Gloss Overlamine	Perm	78#	3271	60	300	3"
			41018	60	150	3"
			3078	54	300	3"
			3594	54	150	3"
			3699	48	300	3"
			3557	48	150	3"
			3595	36	150	3"
			41017	30	150	3"
DOL 1030 Gloss Overlamine	Perm	78#	41028	60	150	3"
			41027	54	150	3"
			41026	48	150	3"
			41025	30	150	3"
DOL 1100 Matte Overlamine	Perm	78#	41020	60	150	3"
			3086	54	300	3"
			3601	54	150	3"
			5249	48	150	3"
			3600	36	150	3"
			41019	30	150	3"
			DOL 2000 Luster Overlamine	Perm	78#	3396
3185	54	150				3"
5485	51	150				3"
41022	48	150				3"
3186	44	150				3"
3187	38	150				3"
41021	30	150				3"
DOL 2100 Gloss Overlamine	Perm	78#				5396
			5395	54	150	3"
			5394	54	75	3"
			5486	51	150	3"
			5393	48	150	3"
			5392	38	150	3"
			41023	30	150	3"
			DOL 2200 Matte Overlamine	Perm	78#	5404
5403	54	150				3"
5487	51	150				3"
5401	48	150				3"
5400	38	150				3"
41024	30	150				3"
DOL 3000 Luster Overlamine	Perm	51#				41037
			41038	54	150	3"
			41039	30	150	3"
DOL 3100 Gloss Overlamine	Perm	51#	41040	60	150	3"
			41041	54	150	3"
			41042	30	150	3"
DOL 3200 Matte Overlamine	Perm	51#	41043	60	150	3"
			41044	54	150	3"
			41045	30	150	3"
DOL 4165 Perforated Window Overlamine	Perm	Poly	3614	54	300	3"
			3622	54	75	3"
			3628	48	300	3"
			3613	48	75	3"
DOL 4500 Conformable Window Film Overlamine	Perm	Poly	3432	54	150	3"
			3431	48	150	3"
DOL 5100 Anti-Graffiti Overlamine	Perm	78#	3624	60	150	3"
			3623	54	150	3"
			3625	54	75	3"
			3626	48	150	3"





Item Number / Material	Item Description	Roll Width"
Dye Sublimation fabric		
M-092-PONGE-1510-14R	Sedona; soft thin, light.	60
Pongee-60x328	Good ink penetration.	60
NU-DT-60-328	Cornado/Tropical; soft, thicker than Pongee	60
NU-DO-60-328	Polytex/Oxford; thick, durable	60
NU-DF-60-328	Duratex/Faille; soft, durable, single-sided	60
NU-DS-60-164	Satin sheen	60
M-092-MESH1510-12	mesh fabric; good ink	60
M-092-MESH1870-12	penetration, no stretch	72
NU-092-ECO-1510-14R	durable short-term	60

Dye-Sub and UV Printable Fabrics

D82501 Muslin	Light weight, sheer polyester fabric w/ look& feel of fine cotton muslin. 9 mils thick and 3oz/sq yd.	Roll Width "
		60 120
D84201 Oxford	Polyester w/ classic oxford weave& canvas-like look with UV or transfer dye sub printing. 15.5 mils thick and 6.3oz/sq yd.	Roll Width "
		55 110
D54301 Taffeta	Polyester fabric w/ silky, satin, textured surface. High end look & economical price. 6 mils thick and 3.4 oz/sq yd.	Roll Width "
		60
D66401 Linen	Spun yarns & polyester fabric w/the look&feel of cotton table linens. 16 mils thick and 7oz/sq yd.	Roll Width "
		60 120
D66402 Linen FR	Spun yarns& polyester fabric w/ look and feel of cotton table linens. Treated to meet the NFPA 701 flammability standard. 16 mils thick and 7oz/sq yd.	Roll Width "
		60 120
D14801 Chintz	Light weight, semi-sheer polyester fabric w/ smooth satin surface, soft hand and superb drape. 6.5 mils thick and 4oz/sq yd.	Roll Width "
		86
D52340 Pique	Medium weight, durable polyester fabric w/ distinctive weave, soft hand and excellent drape. 13.5 mils thick and 6oz/sq yd.	Roll Width "
		60
D58301 Pack Cloth	Heavy-duty polyester fabric w/ coarse surface texture. Rugged& durable, soft to the touch. 19 mils thick and 8.5oz/sq yd.	Roll Width "
		63

Dye-Sub and UV Printable Fabrics (cont'd)

D68301 Upholstery	<i>Tightly woven ring spun yarns give polyester fabric the rich look&feel of fine cotton upholstery. 19 mils thick and 8oz/sq yd.</i>	Roll Width "
		60
		120
D68303 Upholstery FR	<i>Tightly woven ring spun yarns give polyester fabric the rich look&feel of fine cotton upholstery. Treated to meet the NFPA 701 flammability standard. 19 mils thick and 8oz/sq yard.</i>	Roll Width "
		60
		120
D68302 Twill	<i>Ring spun yarns w/ twill weave& look&feel of cotton denim w/durability of polyester. 20 mils thick and 8oz/sq yd.</i>	Roll Width "
		60
		120
D68302FR Twill FR	<i>Ring spun yarns w/ twill weave & look&feel of cotton denim w/durability of polyester. Treated to meet the NFPA 701 flammability standard. 20 mils thick and 8oz/sq yd.</i>	Roll Width "
		60
		120
D12701 FR Sateen	<i>Super-soft, luxurious fabric woven w/ yarns made from fire retardant polyester fiber. Satin sheen w/ soft hand&supple drape. Meets the</i>	Roll Width "
		60
		120
WEAVES of GREEN 	<i>polyester fabrics made from 100% recycled plastic drink bottles.</i>	
D46203 Act II	<i>Tightly woven plain weave pattern durable enough for outdoor use. 17.5 mils thick and 7.5oz/sq yd.</i>	Roll Width "
		60
		120
WEAVES of GREEN 	<i>polyester fabrics made from 100% recycled plastic drink bottles.</i>	
D46201 Act II FR	<i>Tightly woven plain weave pattern durable enough for outdoor use. Treated to meet the NFPA 701 flammability standard. 17.5 mils thick</i>	Roll Width "
		60
		120
	<i>Tightly woven plain weave pattern with a smooth surface texture. Treated to meet the NFPA 701 flammability standard. 4.6 oz/sq yd.</i>	
D68401 Poplin	<i>Traditional, light weight poplin polyester construction. Soft hand&good drape characteristics. 11 mils thick and 3.5oz/sqyd.</i>	Roll Width "
		60
		120

**EcoMedia Price List and Stocking Items
Biodegradable Materials For UV Flatbed Print**



***EcoBanner - Biodegradable
Banner Film***

13mil

SKU	Size
BNR545013	54" x 150'
BNR635013	63" x 150'
BNR725013	72" x 150'



***EcoBacklit - Biodegradable
Backlit Film***

13mil

SKU	Size
BKL545013	54" x 150'
BKL635013	63" x 150'
BKL725013	72" x 150'



***EcoBlock - Biodegradable Block-
Out Film***

15mil

SKU	Size
BLO545015	54" x 150'
BLO635015	63" x 150'
BLO725015	72" x 150'

EQUIPMENT · FILM · MEDIA · ACCESSORIES

Liquid Coating Alternative



	Part Number	Roll Width inches	Roll Length feet
			3" Core
Ultra-thin protective coating applied using a dry transfer process. It is designed as a liquid lamination alternative.	GLOSS	9301736	38
	GLOSS	9301737	55
	GLOSS	9301738	61
	MATTE	9301740	38
	MATTE	9301741	55
	MATTE	9301742	61
			2 1/4" Core
	GLOSS	9301735	25
	MATTE	9301739	25

Thermal Laminating Films -- Oactiva

All films on 3" cores

Gauge Thickness	Part Number	Roll Width	Roll Length
-----------------	-------------	------------	-------------

inches

feet

Octiva Gloss

Octiva Gloss film is heat activated over-laminate with a high polyester content for increased clarity. Use for overlaminating and encapsulating. This is the clearest film on the market today.

1.7 mil	3016572	38	500
	3124184	55	500
3.0 mil	3125749	25	250
	3019170	38	500
	3019072	43	500
	3019078	51	500
	3019116	55	500
	3020597	61	500
5.0 mil	3024783	25	250
	3019368	38	250
	3024786	43	250
	3024787	51	250
	3024789	55	250
10.0 mil	3024763	25	250
	3024856	38	250
	3024766	43	250
	3024767	51	250
	3024929	55	250



Octiva Lustre

Lustre is a semi-gloss, heat-activated polyester film with excellent acid resistance and good folding capabilities.

3.0 mil	3023345	38	500
	3023316	51	500
	3023322	55	500
	3012734	61	500

Octiva Matte

Specifically engineered for a crystal-sharp image with virtually no reflection.

3.0 mil	3022556	38	500
	3022538	51	500
	3022540	55	500

Octiva Matte Hard Coat

The hard coat matte surface provides excellent scratch-resistance and long-term durability.

5.0 mil	3123717	38	250
	3123704	43	250
	3123705	51	250
	3123706	55	250

Octiva Write Erase (Gloss)

Thermal laminating film designed specifically for use with dry erase markers. Wipes clean with ease. Ideal for courtroom exhibits and teaching aids.

1.7 mil	3021357	38	250
	3027023	51	250

Octiva Scuff Free Matte OPP - NEW

A combination of polypropylene film and an abrasion-resistant coating. Gives long-term durability. Ideal for mounting prints to rigid boards or flexible materials.

1.4 mil	3031021	38	1200
	3031022	43	1200
	3031023	51	1200
	3031024	61	900



All films on 3" cores

www.GBCconnect.com

Gauge Thickness	Part Number	Roll Width inches	Roll Length feet
-----------------	-------------	----------------------	---------------------

Octiva Lo-Melt with PreLume - Gloss

Lo-Melt polyester film is primarily used to provide rigidity and high clarity to images. Heat-activated adhesive. Run at temps between 185F and 210F.

3.0 mil	3032010	38	500
	3032011	43	500
	3032012	51	500
	3032013	55	500

Gloss provides a brilliant, clear finish to enhance images

5.0 mil	3032025	38	250
	3032026	38	500
	3032027	43	250
	3032028	43	500
	3032029	51	250
	3032030	51	500
	3032031	55	250
	3032032	55	500

10.0 mil	3032000	38	250
	3032001	43	250
	3032002	51	250
	3032003	55	250

Octiva Lo-Melt with PreLume - Lustre

Lustre reduces glare while maintaining vibrant colors. Ideal for POP displays.

3.0 mil	3032015	38	500
	3032016	43	500
	3032017	51	500
	3032018	55	500

Octiva Lo-Melt with PreLume - Lustre Hardcoat

The scratch-resistance surface makes this finish ideal for trade show graphics.

5.0 mil	3032034	38	250
	3032035	51	250

Octiva Lo-Melt with PreLume - Matte

The non-reflective finish reduces glare. Excellent for brightly lit conditions.

3.0 mil	3032019	38	500
	3032020	43	500
	3032021	51	500
	3032022	55	500

Octiva Lo-Melt with PreLume - Matte Hardcoat

The matte surface diminishes reflection from direct lighting. The hard coat provides scratch resistance.

5.0 mil	3032036	38	250
	3032037	43	250
	3032038	51	250
	3032039	55	250

10.0 mil	3032005	38	250
	3032006	43	250
	3032007	51	250
	3032008	55	250



All films are on 3" cores

	Gauge Thickness	Part Number	Roll Width inches	Roll Length feet
Octiva Lo-Melt White (Backing Film)				
Heat activated polyester film has a white adhesive to provide extra degree of opacity. Primarily used as a backer to thin papers to diffuse the light and brighten colors.	5.0 mil	9300269	38	250
		9300221	51	250
	10.0 mil	9300270	38	250
		9300226	51	250
Octiva Heat Set				
Heat-activated vinyl overlamine with a release liner. Activates at 180-200° F. Offers UV protection. Bonds extremely well to heavy inkjet output and images requiring flexible protection.	Gloss 2.0 mil	9300706	38	150
		9300707	51	150
	Lustre 2.0 mil	9300708	38	150
		9300709	51	150
Octiva Lo-Melt Emboss 50				
Emboss 50 is a heat activated PVC film with a with unique rolling capabilities. The textured (pebbled) surface is scratch-resistant making this film perfect for rollable graphics and high-quality displays.	5.0 mil	3745560	38	250
		3745565	51	250
		3745561	55	250
Octiva Lo-Melt Canvas				
The raised surface of this PVC film simulates the texture of canvas while also providing protection from water and damaging UV rays.	8 mil	3246201	38	250
		3246202	51	250
		3246203	55	250



All films on 3" cores

	Gauge Thickness	Part Number	Roll Width inches	Roll Length feet
Octiva Lo-Melt Textured Satin				
A thermal polyester film with a velvet, textured surface that gives the printed image a deep, vibrant appearance with minimal color shift.	3 mil	9301580	38	250
		9301581	43	250
		9301582	51	250
Designed as a "matched component system" with the corresponding mil thickness of Octiva Lo-Melt Light Barrier.	5 mil	9301583	38	250
		9301584	43	250
		9301585	51	250
		9301589	61	250
		9301586	38	250
<u>Applications:</u>	10 mil	9301587	43	250
3/3 - Display roll-ups / banner stands		9301588	51	250
5/5 - Curved end caps				
10/10 - Flat panel rollable murals				

Octiva Lo-Melt Light Barrier

A thermal polyester, multi-layered backing film This film is specifically constructed to prevent light from showing through the back of a printed graphic.

Applications:

- 3/3 - Display roll-ups / banner stands
- 5/5 - Curved end caps
- 10/10 - Flat panel rollable murals

	Gauge Thickness	Part Number	Roll Width	Roll Length
Arctic Textured Satin				
Over-laminate with a textured surface that gives printed images a deep, vibrant appearance with minimal color shift.	3 mil	3247010	38	150
		3247011	51	150
	8 mil	3247012	38	150
		3247013	51	150
Arctic Light Barrier				
Multi-layered, metalized polyester backing film designed to prevent light from showing through	10 mil	3247003	38	150
		3247004	51	150





All films on 3" cores

www.GBCconnect.com

Gauge Thickness	Part Number	Roll Width inches	Roll Length feet
-----------------	-------------	----------------------	---------------------

Octiva Gloss

Octiva Gloss film is heat activated with a high polyester content for increased clarity. Use for overlaminating and encapsulating. This is the clearest film on the market today. Temp range of 210F - 230F (Standard adhesive)

3 mil	3019110	21	500
	3019112	31	500
	3019078	51	500

Thermal over laminate to be used for encapsulation with Octiva Cold with Octiva Cold Mount OC



Octiva Cold Mount OC

A transparent polyester coated with a thermal adhesive on one side and a clear, permanent pressure-sensitive adhesive on the other. This optically clear mounting film is specifically designed for digital laser output backlit signs. Temp range of 210F - 230F (Standard adhesive)

	3246210	21	500
	3246211	31	500
	3246213	51	500

Octiva Cold Mount White (Formerly Arctic Thermal Mount) NEW

Features a thermally activated white adhesive on one side and a pressure-sensitive adhesive on the other side of a polyester carrier. Adds opacity. It is primarily used with thermal over-laminates to create a decal. Temp range of 185F - 210F (Lo-Melt adhesive)

	9300381	38	250
	9300382	43	250
	9300383	51	250
	9300384	55	250

Hot Mount Adhesive

Heat activated, unsupported adhesive (no carrier). Ideal for flexible or rollable substrates. Very strong bond to all substrates. Designed for pre-coating boards and thermal decaling.

	9300712	38	150
	9300713	51	150

Arctic Pressure Sensitive Mounting Films



All PSA Adhesives on 3" cores

www.GBCconnect.com

Part Number	Roll Width inches	Roll Length feet
-------------	----------------------	---------------------

Arctic Premium Mount

This top-of-the-line acrylic-based adhesive forms a superior bond with foam boards, Sintra, Gatorfoam, Masonite, etc. Clear pressure sensitive mounting adhesive with a 80 lb. coated paper release liner.

3247051	25	150
3247052	31	150
3247053	38	150
3247054	38	300
3247055	43	150
3247056	43	300
3247057	51	150
3247058	51	300
3247059	55	150
3247060	55	300
3247061	61	150

Arctic White Mount

White acrylic-based pressure sensitive mount adhesive. This white polyester carrier is an excellent choice for mounting onto black Gatorfoam and other colored boards to increase opacity. 78 lb. coated paper release liner.

9300901	25	150
9300902	31	150
9300903	38	150
9300904	38	300
9300905	43	150
9300906	43	300
9300907	51	150
9300908	51	300
9300909	55	150
9300910	55	300
9300911	61	150

Arctic DuraMount

An acrylic-based aggressive adhesive that bonds well to porous, non-plastic surfaces. Perfect for posters, digital prints, and price sensitive projects. Clear pressure sensitive mounting adhesive with a 78 lb. coated paper release liner. pH neutral. This is our most popular adhesive.

9300851	25	150
9300852	31	150
9300853	38	150
9300854	38	300
9300855	43	150
9300856	43	300
9300857	51	150
9300858	51	300
9300859	55	150
9300860	55	300
9300869	61	150
9300849	79	150

Arctic Cold Mount

An unsupported, acrylic-based, pressure sensitive mount adh w/ moisture stable, paper release liner. Aggressive adhesive ideal pre-coating boards, flexible/rollable applications.

9300718	51	300
---------	----	-----

Arctic Image Barrier - NEW

Acrylic-based pressure sensitive mounting adhesive. Its opacity makes it an excellent choice for mounting over an existing image, allowing reuse of the substrate.

3245211	38	300
3245212	43	300
3245213	51	300
3245218	61	150

Arctic Pressure Sensitive Mounting Films (Continued)



www.GBCconnect.com

Part Number	Roll Width inches	Roll Length feet
-------------	----------------------	---------------------

Arctic Removable

This adhesive is ideal for floor graphics. Its opaque carrier prevents any bleed through. Does not leave residue on floor.

9300866	38	150
9300914	51	150

Arctic Lo-Tack

Pressure sensitive, removable window adhesive. One side of adhesive is permanent; the other side is removable. Specially engineered with small grooves in the adhesive that allows trapped air to escape. This allows for on-site handling, so images can be installed by hand without creating air bubbles.

9300888	38	150
9300913	51	150

Arctic Vue-Thru

Two-sided, optically clear adhesive used to mount the face of prints to Plexiglas.

3245200	31	150
3245201	38	150
3245202	51	150

Arctic Pressure Sensitive Substrates and Supplies



www.GBCconnect.com

Part Number	Roll Width inches	Roll Length feet
-------------	----------------------	---------------------

Kraft Paper

A brown kraft paper in roll form used as a backer when doing pressure sensitive over-lamination. It allows for single-sided lamination by preventing adhesive from coming into contact with the roller

9300704	38	450
9300714	43	450
9300700	51	450
9300701	55	450
9300702	61	450

Magnetic Mounting Material- NEW

A 15 mil magnetic substrate in roll form allows for graphic output to be installed by any end user, without the use of professional installers. Magnetic receptive surface req'd. Recommended for indoor applications.

9301744	40	50
---------	----	----



All PSA Overlaminates on 3" cores

www.GBCconnect.com

Part Number	Roll Width inches	Roll Length feet
-------------	----------------------	---------------------

Arctic Photo (2mil)

Arctic Photo Gloss is a protective overlaminate made of polyester. It provides an ultra gloss finish for high quality photographic and ink-jet output.

9300803	38	150
---------	----	-----

Arctic Gloss (3mil)

Arctic Gloss is a protective over-laminate made of PVC. It provides a gloss, color enhancing finish for posters and prints.

9300811	25	150
9300812	31	150
9300813	38	150
9300814	43	150
9300815	51	150
9300816	51	300
9300817	55	150
9300818	61	150
9300819	79	150

Arctic Lustre (3mil)

Arctic Lustre is a semi-gloss protective over-laminate, also made of PVC. It minimizes reflections, without loss of sharpness. This is our most popular PSA over-laminate.

9300821	25	150
9300822	31	150
9300823	38	150
9300846	38	300
9300824	43	150
9300825	51	150
9300826	51	300
9300827	55	150
9300828	55	300
9300829	61	150
9300847	79	150

Arctic Matte (3mil)

Arctic matte is a matte protective over-laminate made of PVC. This provides a non-reflective finish, which is considered by many people in the industry to be the deepest matte available.

9300831	31	150
9300832	38	150
9300833	43	150
9300834	51	150
9300835	51	300
9300836	55	150
9300837	55	300
9300838	61	150
9300839	79	150

Arctic Pressure Sensitive Over-Laminates (continued)



All PSA Over-laminates on 3" cores

www.GBCconnect.com

Part Number	Roll Width inches	Roll Length feet
-------------	----------------------	---------------------

Arctic Polycarbonate (5 mil)

Durable over-laminate for POP and trade

9300728	38	150
9300730	51	150

Arctic Floor Mat (7 mil)

A pressure-sensitive, UL approved, slip resistant, floor graphic vinyl laminate. Has a slightly textured surface. Designed for use with GBC Arctic Removable Mounting Adhesive.

3247020	38	150
3247021	51	150

Arctic Write Erase (2 mil)

This film can be written on with a dry erase marker and easily wiped clean without any ghosting effect. Made of polypropylene.

3245204	51	150
---------	----	-----

Indoor and Outdoor

Arctic Graffiti (1 mil PVF)

Arctic Graffiti is a Tedlar based film that is anti-graffiti with UV protection. This film provides extreme durability and is recommended for outdoor use.

9300883	38	150
9300884	55	150

Arctic UV (3 mil)

A pressure-sensitive cast vinyl laminate with a solvent based adhesive, providing a strong outdoor solution. Works with adhesive-backed vinyl including 3M products.

UV Cast Gloss

3247031	38	150
3247030	55	150

UV Sand

3247025	38	150
3247026	51	150
3247027	55	150

Arctic Choice Vinyl (2 mil)

7-Year

A pressure-sensitive cast vinyl laminate with a solvent based adhesive, providing a warranted, long-term, outdoor solution. Use with SurePrint Direct Choice Vinyl to create vehicle wraps.

3245230	30	150
3245231	54	150

Arctic Select Vinyl (3 mil)

3-Year

A pressure-sensitive calendared vinyl laminate with a solvent based adhesive, providing a warranted, outdoor solution for flat panel graphics. Use with SurePrint Direct Select Vinyl.

3245232	30	150
3245233	54	150



Glen Raven

Textile media for solvent and UV printing.

Part Number	Width"	Length'
<i>Sunbrella Inkjet White</i>		
1666/000	54	75
1665/0000	60	150
<i>Poly Oxford White</i>		
1664/0000	54	75
1663/0000	60	150
<i>Poly Light White</i>		
1662/0000	54	75
1661/0000	60	150
<i>Vivitex FR Banner</i>		
1402/0000	54	75
1401/0000	60	150
<i>Vivitex FR Banner Lite</i>		
1404/0000	54	75
1403/0000	60	150



SIZE

Part Number

MURAL PRO	Length "	Width '		228 GRAM DIGITAL WALLCOVERING MEDIA
50"X300 FT	50	300	3"CORE C	68827
VERONA 285T	ARCHES® BY MAGICLEE 285G TEXTURED PAPER			
24"X35 FT	24	35	3"CORE	49047
36"X35 FT	36	35	3"CORE	49048
44"X35 FT	44	35	3"CORE	49050
50"X35 FT	50	35	3"CORE	49051
VERONA 285S	ARCHES® BY MAGICLEE 285G SMOOTH PAPER			
24"X35 FT	24	35	3"CORE	64144
36"X35 FT	36	35	3"CORE	64146
TOTAL-PHOTO M	UNIVERSAL MATTE PHOTO-REALISTIC PAPER			
36"X100 FT	36	100	3"CORE	68975
44"X100 FT	44	100	3"CORE	68977
50"X100 FT	50	100	3"CORE	68978
60"X100 FT	60	100	3"CORE	68981
POS PRO+ 200	UNIVERSAL BLOCK OUT POP UP BANNER			
36"X100 FT	36	100	3"CORE	68813
44"X100 FT	44	100	3"CORE	69219
50"X100 FT	50	100	3"CORE	69220
60"X100 FT	60	100	3"CORE	70507
POS PRO+SATIN	10 MIL BLOCK OUT SATIN POPUP BANNER			
36"X100 FT	36	100	3"CORE	70580
POS PRO+ 400	16.5 UNIV BLOCK OUT TRADE SHOW GRAPHICS			
36"X100 FT	36	100	3"CORE	70797
50"X100 FT	50	100	3"CORE	70798
POSPRO+UV CURE	BLOCK OUT FILM FOR UV CURE PRINTERS			
36"X200 FT	36	200	3"CORE	70424
PPM7 (GFPPM7)	9 MIL MATTE POLYPROPYLENE BANNER			
36"X100 FT	36	100	3"CORE	49009
54"X100 FT	54	100	3"CORE	49010
POSTERMAX	8.5 MIL POSTER PAPER FOR ECO SOLVENT			
54"x200 FT	54	200	3"CORE	70374
60"X200 FT	60	200	3"CORE	70375
FAB6	6.8 MIL, 100% POLYESTER WOVEN FABRIC			
36"X150 FT	36	150	3"CORE	49021
50"X150 FT	50	150	3"CORE	49022
FAB-FR	7 MIL, FLAME RETARDANT POLYESTER FABRIC			
36"X150 FT	36	150	3"CORE	70232
50"X150 FT	50	150	3"CORE	70233
60"X150 FT	60	150	3"CORE	70234
SBL-7(DMBL-7UV)	7 MIL UNIVERSAL BACK-LIT FILM			
36"X100 FT	36	100	3"CORE	66629
42"X100 FT	42	100	3"CORE	67049
50"X100 FT	50	100	3"CORE	66630
50"X300 FT	50	300	3"CORE	66627
54"X100 FT	54	100	3"CORE	66870
60"X100 FT	60	100	3"CORE	66872



SIZE

Part Number

SIZE				Part Number
SCF-7				
36"X200 FT	36	200	3"CORE	70452
54"X200 FT	54	200	3"CORE	70377
60"X100 FT	60	100	3"CORE	70289
GFIOP212RG				212 GMS WET STRENGTH PAPER-ARIZONA
54"X150 FT	54	150	3"CORE	38266
GFPHOTO				GLOSS PHOTO REALISTIC PAPER
30"X100 FT	30	100	3"CORE	65747
36"X100 FT	36	100	3"CORE	64972
50"X100 FT	50	100	3"CORE	64973
50"X125 FT	50	125	3"CORE	64976
50"X200 FT	50	200	3"CORE	68805
54"X100 FT	54	100	3"CORE	68037
60"X100 FT	60	100	3"CORE	65271
60"X125 FT	60	125	3"CORE	65272
60"X200 FT	60	200	3"CORE	68806
GFPHOPSA				GLOSSY PHOTO REALISTIC PAPER W/PSA
50"X100 FT	50	100	3"CORE	69048
60"X100 FT	60	100	3"CORE	69049
GFIOP140				140 G WET STRENGTH POSTER PAPER
42"X200 FT	42	200	3"CORE	48743
48"X200 FT	48	200	3"CORE	48744
48"X1000FT	48	1000	6"CORE	46556
54"X150 FT	54	150	3"CORE	46473
54"X500 FT	54	500	3"CORE	46679
54"X1000FT	54	1000	3"CORE	46678
60"X200 FT	60	200	3"CORE	47014
60"X500 FT	60	500	3"CORE	44422
61"X1000FT	61	1000	6"CORE	37121
GFIOP140PSA				140 GMS, PSA POSTER PAPER
36"X90 FT	36	90	3"CORE	65227
60"X90 FT	60	90	3"CORE	66053
GFIOP212				212G WET STRENGTH POSTER
54"X150 FT	54	150	3"CORE	67106
54"X300 FT	54	300	3"CORE	66835
60"X200 FT	60	200	3"CORE	47015
60"X500 FT	60	500	3"CORE	44423
61"X1000FT	61	1000	6"CORE	37122
GFIOP212 EMB				EMBOSSSED 212 GRAM WET STRENGTH
54"X150 FT	54	150	3"CORE	70114
GFTRP				209G TEAR RESISTANT PAPER
36"X500 FT	36	500	3"CORE	45671
54"X150 FT	54	150	3"CORE	46477
60"X500 FT	60	500	3"CORE	44424
61"X1000FT	61	1000	6"CORE	37123
GFCVM				17 MIL MATTE CANVAS
36"X75 FT	36	75	3"CORE	66027
50"X75 FT	50	75	3"CORE	66028
54"X75 FT	54	75	3"CORE	66029
60"X75 FT	60	75	3"CORE	66030
72"X75 FT	72	75	3"CORE	70691



SIZE

Part Number

GFCVG				23 MIL GLOSSY POLY/COTTON CANVAS	
50"X75 FT	50	75	3"CORE		68459
54"X75 FT	54	75	3"CORE		68460
60"X75 FT	60	75	3"CORE		68461
GF POLY				GLOSSY POLYPROPYLENE BANNER	
36"X100 FT	36	100	3"CORE		67061
42"X100 FT	42	100	3"CORE C		68730
54"X100 FT	54	100	3"CORE		67062
60"X100 FT	60	100	3"CORE		67063



LG Chem



Alpha Imaging Technologies

VIZUON™

Product family - VIZUON PRINT

Product: 3.9 mil, monomeric PSA film for digital printing

Item	width"	length'	Finish
LD3810G	30	150	Gloss
LD3810G/M	50	150	Gloss/Matte
LD3810G/M	54	150	Gloss/Matte
LD3810G/M	60	150	Gloss/Matte

Application and Use: Indoor sign and mid/short term outdoor advertising

Adhesive: Grey, solvent-based permanent acrylic adhesive

Release Liner: Super Flat, double-side olefin coated paper

Outdoor Durability: 3 years outdoors with proper application and lamination

Special Features: Available in gloss (LD3810G) or matte (LD3810M) finish

Product family - VIZUON PRINT

Product: 3.2 mil, polymeric PSA film for digital printing

Item	width"	length'	Finish
LD3910G/M	54	150	Gloss/Matte
LD3910G/M	60	150	Gloss/Matte

Application and Use: Indoor sign and mid term outdoor advertising

Adhesive: Grey, solvent-based permanent acrylic adhesive

Release Liner: Super Flat, double-side olefin coated paper

Outdoor Durability: 5 years outdoors with proper application and lamination

Special Features: Available in gloss (LD3910G) or matte (LD3910M) finish

Product family - VIZUON PRINT

Product: .. 4.0 mil, polymeric PSA film for digital printing

Item	width"	length'	Finish
LD4910M	54	150	Matte
LD4910M	60	150	Matte

Application and Use: .. Indoor sign and mid/short term outdoor advertising

Adhesive: .. Clear, solvent-based permanent acrylic adhesive

Release Liner: .. Super Flat, double-side olefin coated paper

Outdoor Durability: .. 5 years outdoors with proper application and lamination

Special Features: .. Available in matte (LD4910M) finish

Product family - VIZUON PRINT

Product: .. 5.6 mil, Perforated Window Film (50% perforation for LM50000, 30% perf

Item	width"	length'	Finish
LM50000	48	90	Perforated
LM50000	54	90	Perforated
LM53000	48	90	Perforated

Application and Use: .. Window / transparent surface graphics

Adhesive: .. Removable, solvent-based acrylic adhesive

Release Liner: .. Kraft release paper / PET liner

Outdoor Durability: .. 1 year outdoors with proper application and lamination

Product family - VIZUON PRINT AiRFREE
Product: 2.3 mil, cast PSA film for digital printing

Item	width"	length'	Finish
LD823AG	30	150	Gloss
LD823AG	54	150	Gloss
LD823AG	60	150	Gloss

Application and Use: .. Flat surfaces, simple corrugations, and rivets
Adhesive: .. Grey, solvent-based, permanent acrylic adhesive
Release Liner: .. Super Flat, double-side olefin coated paper
Outdoor Durability: .. 8 years outdoors with proper application and lamination
Compatible Products: .. VIZUONPRINT LP80990 - cast lamination film

Product family - VIZUON PRINT
Product: .. 2.3 mil, cast PSA lamination film / also can be used for digital printing

Item	width"	length'	Finish
LP80990G	30	150	Gloss
LP80990G	54	150	Gloss
LP80990G	60	150	Gloss

Application and Use: .. Lamination film for LD821AG / Flat surfaces and simple corrugations
Adhesive: .. Clear, solvent-based, permanent acrylic adhesive
Release Liner: .. Super Flat, double-side olefin coated paper
Outdoor Durability: .. 8 years outdoors with proper application and lamination

Product family - VIZUON PRINT
Product: .. 2.3 mil, cast PSA lamination film

Item	width"	length'	Finish
LP89000G	48	90	Gloss
LP89000G	54	90	Gloss

Application and Use: .. Optically clear lam film for LM50000, LM53000 / Flat surfaces & simple corrugations
Adhesive: .. Clear, solvent-based, permanent acrylic adhesive
Release Liner: .. PET liner
Outdoor Durability: .. 8 years outdoors with proper application and lamination
Compatible Products: .. VIZUON PRINT LM50000, LM53000 - perforated window films

Product family - VIZUON PRINT AiRFREE
Product: .. 3.2 mil, monomeric PSA film for digital printing

Item	width"	length'	Finish
LD383AG/M	30	150	Gloss/Matte
LD383AG/M	54	150	Gloss/Matte
LD383AG/M	60	150	Gloss/Matte

Application and Use: .. Indoor sign and mid/short term outdoor advertising
Adhesive: .. Grey, solvent-based permanent acrylic adhesive
Release Liner: .. Super Flat, double-side olefin coated paper
Outdoor Durability: .. 3 years outdoors with proper application and lamination
Special Features: .. Available in gloss (LD385AG) or matte (LD385AM) finish
Compatible Products: .. VIZUON PRINT LP3812G - calendared laminating film

Product family - VIZUON PRINT AiRFREE

Product: .. 3.6 mil, calendered PSA lamination film / also can be used for di

Item	width"	length'	Finish
LP3812G/M	30	150	Gloss/Matte
LP3812G/M	54	150	Gloss/Matte
LP3812G	60	150	Gloss

Application and Use: .. Lamination film for LD3810G/M Flat surfaces and simple corrugations

Adhesive: .. Clear, solvent-based, permanent acrylic adhesive

Release Liner: .. 83#, Double-side PE coated paper

Outdoor Durability: .. 3 years outdoors with proper application and lamination

Compatible Products: .. VIZUON PRINT LD3810G/M - calendered print vinyl

Product family - VIZUON PRINT AiRFREE

Product: .. 3.2 mil, monomeric PSA film for digital printing

Item	width"	length'	Finish
LD393AG/M	30	150	Gloss/Matte
LD393AG/M	54	150	Gloss/Matte
LD393AG/M	60	150	Gloss/Matte

Application and Use: .. Indoor sign and mid/short term outdoor advertising

Adhesive: .. Grey, solvent-based, permanent acrylic adhesive

Release Liner: .. Super Flat, double-sided olefin coated paper

Outdoor Durability: .. 5 years outdoors with proper application and lamination

Compatible Products: .. VIZUON PRINT LD3912G - calendered laminating film

Product family - VIZUON PRINT AiRFREE

Product: .. 3.6 mil, calendered PSA lamination film / also can be used for di

Item	width"	length'	Finish
LP3912G/M	30	150	Gloss/Matte
LP3912G/M	54	150	Gloss/Matte
LP3912G/M	60	150	Gloss/Matte

Application and Use: .. Lamination film for LD3910G/M Flat surfaces and simple corrugations

Adhesive: .. Clear, solvent-based, permanent acrylic adhesive

Release Liner: .. 83#, Double-side PE coated paper

Outdoor Durability: .. 5 years outdoors with proper application and lamination

Compatible Products: .. VIZUON PRINT LD3910G/M - calendered print vinyl

Product family - VIZUON BANNUX
Product: Ultra Smooth Banner 12-oz

Item	width"	length'	Type
USB12	39	99	12-oz
USB12	54	99	12-oz
USB12	63	99	12-oz
USB12	74	99	12-oz
USB12	39	150	12-oz
USB12	54	150	12-oz
USB12	63	150	12-oz
USB12	74	150	12-oz

Product family - VIZUON BANNUX
Product: Ultra Smooth Banner 14-oz

Item	width"	length'	Type
USB14	39	99	14-oz
USB14	54	99	14-oz
USB14	63	99	14-oz
USB14	74	99	14-oz
USB14	39	150	14-oz
USB14	54	150	14-oz
USB14	63	150	14-oz
USB14	74	150	14-oz

Ultra Smooth Banner 12 and 14 are 12-oz and 14-oz block-out product, respectively, developed for applications for indoor and limited outdoor application. All Bannux products are built using a polymer fabric with high-quality polyester yarn and PVC to eliminate such deformations as contraction.

Application and Use: Indoor advertising

Durability: Short term outdoor durability

Features: Matte Finish, smooth on both sides for double-side printing & block out features

Compatible products: VIZUON CAL, VIZUON CAST, VIZUON PRINT

Product family - VIZUON BANNUX
Product: Ultra Gloss Supreme / Ultra Matte Supreme 13-oz

Item	width"	length'	Type
UGS13/UMS13	30	99	13-oz
UGS13/UMS13	39	99	13-oz
UGS13/UMS13	54	99	13-oz
UGS13/UMS13	63	99	13-oz
UGS13/UMS13	73	99	13-oz
UGS13/UMS13	39	150	13-oz
UGS13/UMS13	50	150	13-oz
UGS13/UMS13	54	150	13-oz
UGS13/UMS13	63	150	13-oz
UGS13/UMS13	73	150	13-oz
UGS13/UMS13	79	165	13-oz
UGS13/UMS13	98	165	13-oz

Bannux Ultra Gloss/Matte Supreme is a sturdy 13-oz product developed for front-lit applications for indoor and outdoor application. All Bannux products are built using a polymerized fabric with high-quality polyester yarn and PVC to eliminate such deformations as contraction.

Application and Use: Indoor advertising, digital screen and print, billboards

Durability: 1-year outdoor durability

Features: Available in Gloss or Matte Finish, excellent printability and weather resistance

Compatible products: VIZUON CAL, VIZUON CAST, VIZUON PRINT

Product family - VIZUON BANNUX

Product: 5500 10-oz

Item	width"	length'	Type
5500-10	39	99	10-oz
5500-10	54	99	10-oz
5500-10	63	99	10-oz
5500-10	73	99	10-oz
5500-10	39	150	10-oz
5500-10	54	150	10-oz
5500-10	63	150	10-oz
5500-10	73	150	10-oz

Bannux 5500 is a 10-oz product developed for front-lit applications for indoor and outdoor applicatio
Bannux products are built using a polymerized fabric with high-quality polyester yarn and PVC to elim
such deformations as contraction.

Application and Use: Indoor and outdoor advertising.

Durability: 1-year outdoor durability

Compatible products: VIZUON CAL, VIZUON CAST, VIZUON PRINT

Product family - VIZUON BANNUX

Product: 110B 16-oz

Item	width"	length'	Type
110B	39	99	16-oz
110B	54	99	16-oz

Bannux 110B is a 16-oz product developed for front-lit applications for indoor and outdoor applicatio
Bannux products are built using a polymerized fabric with high-quality polyester yarn and PVC to elim
such deformations as contraction.

Application and Use: Indoor and outdoor advertising.

Durability: 1-year outdoor durability

Compatible products: VIZUON CAL, VIZUON CAST, VIZUON PRINT

Product family - VIZUON BANNUX

Product: VIZUON XIGN

Item	width"	length'	Type
VIZXIGN39	39	99	fabric-free
VIZXIGN54	54	99	fabric-free

Product: VIZUON XIGN is a revolutionary new product that eliminates fabric from the make up of th
material. The special construction makes it wrinkle& curl-resistant; ideal for banner stand applicatio

Application and Use: .. Indoor and outdoor advertising, banner stands, etc.

Durability: .. 1-year outdoor durability

Compatible Products: .. VIZUON CAL.. VIZUON CAST . VIZUON PRINT



Neschen

Textile media for solvent and ultra-violet printing.

Part Number	Width"	Length'
-------------	--------	---------

Artist Banner Light

★ 6019748	54	164
★ 6019749	61	164

Artist Banner Heavy

6019750	54	164
6014915	61	164

Premium Cotton Light

6014032	54	99
6014033	61	99
6014036	80	164

Premium Cotton Heavy

6014039	54	99
6014040	61	99
6014044	80	164

Samba Plus

6009860	59	328
---------	----	-----

TCS-P Flag

6023883	54	99
6023884	61	164

Oracal Adhesive Vinyl

Ultra-calendared pressure sensitive films for use in solvent and ultra-violet printers.

Part Number	Roll Width"	Roll Length'
Floor Graphics		
1663M-30-010	30	150
1663M-36-010	36	150
1663M-50-010	50	150
★ 1663M-54-010	54	150
1663M-60-010	60	150
Transit graphics digital media 4 mil PVC film. White gloss removable adhesive		
3109G-31-010	31	150
3109G-54-010	54	150
3109G-62-010	62	150
4 Year Calendared 3.75 ml Economy grade for flat surfaces. Clear water based permanant adhesive		
★ 3164G-30-010	30	150
3164G-50-010	50	150
★ 3164G-54-010	54	150
★ 3164G-60-010	60	150
★ 3164G-80-010	80	150
★ 3164M-30-010	30	150
★ 3164M-54-010	54	150
3164M-60-010	60	150
3164M-80-010	80	150
5 Year Calendered 3.75 mil General signage Flat surfaces Grey Solvent permanent adhesive		
★ 3165G-54-010	54	150
★ 3165G-60-010	60	150
★ 3165M-54-010	54	150
★ 3165M-60-010	60	150
5 Year Calendared 3.75 mil RapidAir conformable		
3165GRA-30-010	30	150
3165GRA-54-010	54	150
3165GRA-60-010	60	150
6 mil calendared PVC film, movable matte white wall graphic		
3268M-30-010	30	150
3268M-54-010	54	150
3268M-60-010	60	150
6 Year Calendared 2.75 mil CommandForm Vehicle conformable, medium to long term applications		
3551G-30-101	30	150
3551G-36-101	36	150
★ 3551G-54-101	54	150
3351G-60-101	60	150
6 Year Calendared 2.75 mil RapidAir Vehicle conformable, medium to long term applications		
3551GRA-30-101	30	150
3551GRA-50-101	50	150
★ 3551GRA-54-101	54	150
3551GRA-60-101	60	150
4 Year Calandered 3 mil Transparent/Clear Film Clear removable adhesive Short term window graphics		
3620G-30-000	30	150
3620G-50-000	50	150
★ 3620G-54-000	54	150
★ 3620G-60-000	60	150
★ 3620G-80-000	80	150
3620M-30-000	30	150
3620M-54-000	54	150
3620M-60-000	60	150
★ 3620M-80-000	80	150

Oracal Adhesive Vinyl

Ultra-calendared pressure sensitive films for use in solvent and ultra-violet printers.

Part Number	Roll Width"	Roll Length'
4 Year Calendered 3 mil Short term outdoor transit or billboard-flat surfaces only. Grey removable water based adhesive		
3621G-30-010	30	150
3621G-36-010	36	150
3621G-50-010	50	150
★ 3621G-54-010	54	150
3621G-60-010	60	150
3621G-80-010	80	150
3621M-30-010	30	150
3621M-36-010	36	150
3621M-50-010	50	150
3621M-54-010	54	150
3621M-60-010	60	150
Orajel Low Tack Wall & Window Graphics inkjet media.		
Repositionable short- term interior use for wall and glass graphics		
3628M-30-010	30	150
3628M-54-010	54	150
3628M-60-010	60	150
4 Year Calendered 3 mil Economy Grade General graphics Clear permanent water based adhesive		
3640G-30-010	30	150
3640G-50-010	50	150
★ 3640G-54-010	54	150
★ 3640G-60-010	60	150
3640G-80-010	80	150
3640M-30-010	30	150
★ 3640M-54-010	54	150
★ 3640M-60-010	60	150
3640M-80-010	80	150
4 Year calendered 3 mil soft PVC economical digital media with water based adhesive		
3641G-30-010	30	150
3641G-54-010	54	150
3641G-60-010	60	150
5 year Calendered 2.5 mil Vehicle graphics/Gen signage Grey permanent solvent adhesive in white (-010) and transparent (-		
★ 3651G-30-010	30	150
3651G-30-000	30	150
★ 3651G-36-010	36	150
3651G-36-000	36	150
3651G-50-010	50	150
3651G-50-000	50	150
★ 3651G-54-010	54	150
★ 3651G-54-000	54	150
★ 3651G-60-010	60	150
★ 3651G-60-000	60	150
★ 3651M-30-010	30	150
★ 3651M-36-010	36	150
3651M-50-010	50	150
★ 3651M-54-010	54	150
3651M-54-000	54	150
★ 3651M-60-010	60	150
3651SG-30-010	30	150
3651SG-36-010	36	150
★ 3651SG-54-010	54	150
3651SG-60-010	60	150
Perforated window graphics inkjet media 50/50		
3675-24-010	24	150
3675-30-010	30	150
3675-54-010	54	150
Perforated window graphics inkjet media 60/40		
3676-24-010	24	150
3676-30-010	30	150
3676-54-010	54	150

Oracal Adhesive Vinyl

Ultra-calendared pressure sensitive films for use in solvent and ultra-violet printers.

Part Number	Roll Width"	Roll Length'
5 year Calendered 2.5 mil General medium term signage Grey removable adhesive		
3691G-54-010	54	150
3691G-60-010	60	150
★ 3691M-54-010	54	150
3691M-60-010	60	150
7 Year Calendered 3 mil Translucent Film Backlit applications		
3850-30-010	30	150
★ 3850-54-010	54	150
★ 3850-60-010	60	150
10 Year Cast 2 mil Professional Wrapping Film with Command Form Grey repositionable permanent adhesive		
3951G-15-010	15	150
3951G-30-010	30	150
3951G-36-010	36	150
3951G-50-010	50	150
★ 3951G-54-010	54	150
3951G-60-010	60	150
10 Year Cast 2 mil Professional Wrapping Film with Command Form Grey repositionable permanent adhesive		
3951GRA-30-010	30	150
3951GRA-50-010	50	150
3951GRA-54-010	54	150
3951GRA-60-010	60	150

Oraguard Laminating Films

Part Number	Roll Width"	Roll Length'
2.5 ml Economy PVC Film 1 Year UV Factor		
200G-30	30	150
200G-36	36	150
200G-40	40	150
200G-50	50	150
200G-54	54	150
200G-60	60	150
200M-30	30	150
200M-36	36	150
200M-40	40	150
200M-50	50	150
200M-54	54	150
200M-60	60	150
200SG-30	30	150
200SG-36	36	150
200SG-40	40	150
200SG-50	50	150
200SG-54	54	150
200SG-60	60	150
2.75 ml PVC Film Medium Term 2 Year UV Factor		
★ 210G-30	30	150
210G-36	36	150
★ 210G-40	40	150
210G-50	50	150
★ 210G-54	54	150
★ 210G-60	60	150
210M-30	30	150
210M-36	36	150
210M-40	40	150
210M-50	50	150
★ 210M-54	54	150
210M-60	60	150
210SG-30	30	150
210SG-36	36	150
210SG-40	40	150
210SG-50	50	150
210SG-54	54	150
210SG-60	60	150
2.75 ml PVC Film Long Term 3 Year UV Factor		
215G-30	30	150
215G-36	36	150
215G-40	40	150
215G-50	50	150
215G-54	54	150
215G-60	60	150
215M-30	30	150
215M-36	36	150
215M-40	40	150
215M-50	50	150
215M-54	54	150
215M-60	60	150
215SG-30	30	150
215SG-36	36	150
215SG-40	40	150
215SG-50	50	150
215SG-54	54	150
215SG-60	60	150
7 year Anti-Graffiti Laminating film - High gloss		
240HG-30	30	150
240HG-36	36	150
240HG-40	40	150
240HG-50	50	150
240HG-54	54	150
240HG-60	60	150
4.75 ml PVC Laminating Film - Anti-Skid		
250AS-36	36	150
250AS-40	40	150
250AS-50	50	150
★ 250AS-54	54	150



Oraguard Laminating Films

Part Number	Roll Width"	Roll Length'
6.5 ml PVC Laminating Film - Anti-Skid		
255AS-36	36	150
255AS-40	40	150
255AS-50	50	150
255AS-54	54	150
2ml Cast PVC Long Term/Fleet Graphics - 4 Year UV Factor		
290G-30	30	150
290G-36	36	150
290G-40	40	150
290G-50	50	150
290G-54	54	150
290G-60	60	150
★ 290M-30	30	150
290M-36	36	150
290M-40	40	150
290M-50	50	150
290M-54	54	150
290M-60	60	150
2ml Cast PVC Long Term/Fleet Graphics - Optically clear 4 Year UV Factor		
290GF-24	24	150
290GF-30	30	150
290GF-36	36	150
290GF-40	40	150
290GF-50	50	150
290GF-54	54	150
290GF-60	60	150
1ml Cast PVC Long Term/Fleet Graphics - Ultra flexible		
293G-30	30	150
293G-36	36	150
293G-40	40	150
293G-50	50	150
293G-54	54	150
293G-60	60	150
293M-30	30	150
293M-36	36	150
293M-40	40	150
293M-50	50	150
293M-54	54	150
293M-60	60	150



Product	Roll Width"	Roll Length'
DuraSol 9 Mil 3408		
<p>DuraSOL Display is a satin coated, tear-resistant, rigid PVC film with a waterfast coating for solvent inks. It has a cardboard-like touch and the printouts are characterized by high color brilliance, high image definition and long durability. DuraSOL is suitable for applications in various displays and roll-up systems. The coating allows for a very short drying time with low heating temperatures on the eco- and true-solvent printer. Heaters should be set at a maximum 86 degrees F to avoid waves.</p> <p style="text-align: center;">Application:</p> <p>Perfect for wide format full color photographic printing, e.g. indoor signage and short-term promotions, pop-up displays, trade show and exhibit graphics.</p>		
3408-36	36	100
3408-54	54	100
DuraSol 12 Mil 3608		
3608-36	36	100
3608-42	42	100
3608-54	54	100
DuraSol 18 Mil 3508		
3508-36	36	66
3508-54	54	66
TRI SOLVE PAPER		
3686-30	30	165
3686-42	42	165
3686-54	54	165
3686-63	63	165
SureView MESH 8 oz.		
3110-39	39	164
3110-54	54	164
3110-63	63	164
3110-72	72	164
3110-99	99	164
3110-126	126	164

ULTRAFLEX

SYSTEMS INCORPORATED

FRONTLIT 1/10	BIOflex™ FL (15 oz)	Width"	Length'
BIOFLMAT137050	BIOflex™ FL (15 oz)	54.0	164.0
BIOFLMAT160050	BIOflex™ FL (15 oz)	63.0	164.0
BIOFLMAT183050	BIOflex™ FL (15 oz)	72.0	164.0
BIOFLMAT250050	BIOflex™ FL (15 oz)	98.0	164.0
BIOFLMAT320050	BIOflex™ FL (15 oz)	126.0	164.0
BIOFLMAT500050	BIOflex™ FL (15 oz)	196.0	164.0

FRONTLIT 2/10	Ultima® Supreme FL (15 oz)	Width"	Length'
ULTSUP160050	Ultima® Supreme FL (15 oz)	63.0	164.0
ULTSUP203050	Ultima® Supreme FL (15 oz)	80.0	164.0
ULTSUP250050	Ultima® Supreme FL (15 oz)	98.0	164.0
F500321-023	Ultima® Supreme FL (15 oz)	126.0	164.0
F50050-023	Ultima® Supreme FL (15 oz)	196.0	164.0

Normandy® Pro FL (13 oz) (Same material as JetFlex®)			
FRONTLIT 3/10	Normandy® Pro FL (13 oz)	Width"	Length'
NPG25050	Normandy® Pro FL Gloss (13 oz)	98.0	164.0
NPM25050	Normandy® Pro FL Matte (13 oz)	98.0	164.0
NPGAS26050	Normandy® Pro FL Gloss (13 oz)	102.0	164.0
NPMAS26050	Normandy® Pro FL Matte (13 oz)	102.0	164.0
NPGAS32050	Normandy® Pro FL Gloss (13 oz)	126.0	164.0
NPMAS32050	Normandy® Pro FL Matte (13 oz)	126.0	164.0
NPGAS38050	Normandy® Pro FL Gloss (13 oz)	150.0	164.0
NPMAS38050	Normandy® Pro FL Matte (13 oz)	150.0	164.0
NPGAS45050	Normandy® Pro FL Gloss (13 oz)	177.0	164.0
NPMAS45050	Normandy® Pro FL Matte (13 oz)	177.0	164.0
NPGAS50050	Normandy® Pro FL Gloss (13 oz)	196.0	170.0
NPMAS50050	Normandy® Pro FL Matte (13 oz)	196.0	170.0

JetFlex® FL (13 oz) (Same material as Normandy Pro)			
FRONTLIT 4/10	JetFlex® FL (13 oz)	Width"	Length'
PPGFL07650	JetFlex® FL Gloss (13 oz)	30.0	164.0
PPMFL07650	JetFlex® FL Matte (13 oz)	30.0	164.0
PPGFL096550	JetFlex® FL Gloss (13 oz)	38.0	164.0
PPMFL096550	JetFlex® FL Matte (13 oz)	38.0	164.0
PPGFL0965100	JetFlex® FL Gloss (13 oz)	38.0	328.0
PPMFL0965100	JetFlex® FL Matte (13 oz)	38.0	328.0
PPGFL13750	JetFlex® FL Gloss (13 oz)	54.0	164.0
PPMFL13750	JetFlex® FL Matte (13 oz)	54.0	164.0
PPMFL137100	JetFlex® FL Matte (13 oz)	54.0	328.0
PPGFL16050	JetFlex® FL Gloss (13 oz)	63.0	164.0
PPMFL16050	JetFlex® FL Matte (13 oz)	63.0	164.0
PPGFL160100	JetFlex® FL Gloss (13 oz)	63.0	328.0
PPGFL18350	JetFlex® FL Gloss (13 oz)	72.0	164.0
PPMFL18350	JetFlex® FL Matte (13 oz)	72.0	164.0
PPGFL183100	JetFlex® FL Gloss (13 oz)	72.0	328.0
PPMFL183100	JetFlex® FL Matte (13 oz)	72.0	328.0
PPGFL20350	JetFlex® FL Gloss (13 oz)	80.0	164.0
PPMFL20350	JetFlex® FL Matte (13 oz)	80.0	164.0
PPGFL203100	JetFlex® FL Gloss (13 oz)	80.0	328.0
PPMFL203100	JetFlex® FL Matte (13 oz)	80.0	328.0
PPGFL09635FO	JetFlex® FL (Face Out) Gloss (13 oz)	38.0	115.0
PPMFL09635FO	JetFlex® FL (Face Out) Matte (13 oz)	38.0	115.0
PPGFL13735FO	JetFlex® FL (Face Out) Gloss (13 oz)	54.0	115.0
PPMFL13735FO	JetFlex® FL (Face Out) Matte (13 oz)	54.0	115.0
PPGFL16035FO	JetFlex® FL (Face Out) Gloss (13 oz)	63.0	115.0
PPMFL16035FO	JetFlex® FL (Face Out) Matte (13 oz)	63.0	115.0
PPMFL0990100-6	JetFlex® FL (6" Core, FO) Matte (13 oz)	39.0	328.0
PPGFL1370100-6	JetFlex® FL (6" Core, FO) Gloss (13 oz)	54.0	328.0
PPMFL1370100-6	JetFlex® FL (6" Core, FO) Matte (13 oz)	54.0	328.0
PPGFL1625100-6	JetFlex® FL (6" Core, FO) Gloss (13 oz)	64.0	328.0
PPMFL162.5100-6	JetFlex® FL (6" Core, FO) Matte (13 oz)	64.0	328.0

ULTRAFLEX

SYSTEMS INCORPORATED

FRONTLIT 5/10	Superprint Plus FL (13 oz)	Width"	Length'
JFG0965050	Superprint Plus FL Gloss (13 oz)	38.0	164.0
JFM0965050	Superprint Plus FL Matte (13 oz)	38.0	164.0
JFG137050	Superprint Plus FL Gloss (13 oz)	54.0	164.0
JFM137050	Superprint Plus FL Matte (13 oz)	54.0	164.0
JFM137100	Superprint Plus FL Matte (13 oz)	54.0	328.0
JFG160050	Superprint Plus FL Gloss (13 oz)	63.0	164.0
JFM160050	Superprint Plus FL Matte (13 oz)	63.0	164.0
JFM1625100.6	Superprint Plus FL (6" Core, FO) Matte (13 oz)	64.0	328.0
JFG183050	Superprint Plus FL Gloss (13 oz)	72.0	164.0
JFM183050	Superprint Plus FL Matte (13 oz)	72.0	164.0
JFM183100	Superprint Plus FL Matte (13 oz)	72.0	328.0
JFG203050	Superprint Plus FL Gloss (13 oz)	80.0	164.0
JFM203050	Superprint Plus FL Matte (13 oz)	80.0	164.0
JFG250050	Superprint Plus FL Gloss (13 oz)	98.0	164.0
JFM250050	Superprint Plus FL Matte (13 oz)	98.0	164.0
JFG260050	Superprint Plus FL Gloss (13 oz)	102.0	164.0
JFM260050	Superprint Plus FL Matte (13 oz)	102.0	164.0
JFG320050	Superprint Plus FL Gloss (13 oz)	126.0	164.0
JFM320050	Superprint Plus FL Matte (13 oz)	126.0	164.0
JFG380050	Superprint Plus FL (13 oz) Gloss	150.0	164.0
JFM380050	SuperPrint Plus FL (13 oz) Matte	150.0	164.0
JFG450050	Superprint Plus FL (13 oz) Gloss	177.0	164.0
JFM450050	SuperPrint Plus FL (13 oz) Matte	177.0	164.0
JFG500052	Superprint Plus FL (13 oz) Gloss	196.0	170.0
JFM500052	SuperPrint Plus FL (13 oz) Matte	196.0	170.0

FRONTLIT 6/10	Normandy® Eclipse™ FL (13 oz)	Width"	Length'
BWG32050	Normandy® Eclipse™ FL Gloss (13 oz)	126.0	164.0
BWM32050	Normandy® Eclipse™ FL Matte (13 oz)	126.0	164.0
BWG50050	Normandy® Eclipse™ FL Gloss (13 oz)	196.0	164.0
BWM50050	Normandy® Eclipse™ FL Matte (13 oz)	196.0	164.0

FRONTLIT 7/10	Superprint Plus Eclipses (13 oz)	Width"	Length'
SPBWGL320050	Superprint Plus Eclipse Gloss (13 oz)	126.0	164.0
SPBWML320050	Superprint Plus Eclipse Matte (13 oz)	126.0	164.0
SPBWGL380050	Superprint Plus Eclipse Gloss (13 oz)	150.0	164.0
SPBWML380050	Superprint Plus Eclipse Matte (13 oz)	150.0	164.0
SPBWGL450050	Superprint Plus Eclipse Gloss (13 oz)	177.0	164.0
SPBWML450050	Superprint Plus Eclipse Matte (13 oz)	177.0	164.0
SPBWGL500050	Superprint Plus Eclipse Gloss (13 oz)	196.0	164.0
SPBWML500050	Superprint Plus Eclipse Matte (13 oz)	196.0	164.0

FRONTLIT 8/10	Normandy Lite FL (11 oz)	Width"	Length'
NLM320050	Normandy Lite Matte (11 oz)	126.0	164.0
NLM380050	Normandy Lite Gloss (11 oz)	150.0	164.0
NLG500050	Normandy Lite Gloss (11 oz)	196.0	164.0
NLM500050	Normandy Lite Matte (11 oz)	196.0	164.0

FRONTLIT 9/10	UltraBanner® FL (10 oz)	Width"	Length'
BF30WHTG	UltraBanner® FL Gloss (10 oz)	30.0	164.0
BF30WHTM	UltraBanner® FL Matte (10 oz)	30.0	164.0
BF38WHTG50	UltraBanner® FL Gloss (10 oz)	38.0	164.0
BF38WHTM50	UltraBanner® FL Matte (10 oz)	38.0	164.0
BF38WHTM100	UltraBanner® FL Matte (10 oz)	38.0	328.0
BF54WHTG	UltraBanner® FL Gloss (10 oz)	54.0	164.0
BF54WHTM	UltraBanner® FL Matte (10 oz)	54.0	164.0
BF54WHTM100	UltraBanner® FL Matte (10 oz)	54.0	328.0
BF63WHTG35	UltraBanner® FL Gloss (10 oz)	63.0	115.0
BF63WHTG	UltraBanner® FL Gloss (10 oz)	63.0	164.0
BF63WHTM	UltraBanner® FL Matte (10 oz)	63.0	164.0
BF72WHTG	UltraBanner® FL Gloss (10 oz)	72.0	164.0
BF72WHTM	UltraBanner® FL Matte (10 oz)	72.0	164.0
BF80WHTG	UltraBanner® FL Gloss (10 oz)	80.0	164.0
BF80WHTM	UltraBanner® FL Matte (10 oz)	80.0	164.0
BF64WHTM100-6	UltraBanner® FL 6" Core, Matte (10 oz)	64.0	328.0

FRONTLIT 10/10	SuperPrint Lite FL (6.5 oz)	Width"	Length'
SPLFLM320100	SuperPrint Lite FL Matte (6.5 oz)	148.0	328.0
SPLFLM500100	SuperPrint Lite FL Matte (6.5 oz)	196.0	328.0

ULTRAFLEX

SYSTEMS INCORPORATED

BACKLIT 1/4		Ultralon® IV BL (20 oz)	Width"	Length'
G114935-L20		Ultralon® IV BL (20 oz)	42.0	164.0
G113635-L20		Ultralon® IV BL (20 oz)	54.0	164.0
G109635-L20		Ultralon® IV BL (20 oz)	66.0	164.0
G109735-L20		Ultralon® IV BL (20 oz)	78.0	164.0
G115135-L20		Ultralon® IV BL (20 oz)	90.0	164.0
G105835-L20		Ultralon® IV BL (20 oz)	102.0	164.0
G385230-L20		Ultralon® IV BL (20 oz)	126.0	164.0
G383930-L20		Ultralon® IV BL (20 oz)	150.0	164.0
G385830-L20		Ultralon® IV BL (20 oz)	196.0	164.0

BACKLIT 2/4		Supersmooth BL (16 oz)	Width"	Length'
SSBL096530		Supersmooth BL (16 oz)	38.0	98.5
SSBL13730		Supersmooth BL (16 oz)	54.0	98.5
SSBL16030		Supersmooth BL (16 oz)	63.0	98.5
SSBL22030		Supersmooth BL (16 oz)	86.0	98.5

BACKLIT 3/4		Vulite® Supreme BL (15 oz)	Width"	Length'
F500321-024		Vulite® Supreme BL (15 oz)	126.0	164.0
F50050-024		Vulite® Supreme BL (15 oz)	196.0	164.0

BACKLIT 4/4		Vulite® Pro BL (15 oz)	Width"	Length'
VPG13750		Vulite® Pro BL Gloss (15 oz)	54.0	164.0
VPM13750		Vulite® Pro BL Matte (15 oz)	54.0	164.0
VPG25050		Vulite® Pro BL Gloss (15 oz)	98.0	164.0
VPM25050		Vulite® Pro BL Matte (15 oz)	98.0	164.0
VPGAS32050		Vulite® Pro BL Gloss (15 oz)	126.0	164.0
VPMAS32050		Vulite® Pro BL Matte (15 oz)	126.0	164.0
VPGAS43050		Vulite® Pro BL Gloss (15 oz)	169.0	164.0
VPMAS43050		Vulite® Pro BL Matte (15 oz)	169.0	164.0
VPGAS50050		Vulite® Pro BL Gloss (15 oz)	196.0	164.0
VPMAS50050		Vulite® Pro BL Matte (15 oz)	196.0	164.0

ULTRAFLEX

SYSTEMS INCORPORATED

BLOCKOUT 1/4		Ultrablockout Banner™ Pro (20 oz)	Width"	Length'
UBOP2032050		Ultrablockout Banner™ Pro (20oz)	126.0	164.0

BLOCKOUT 2/4		Ultrablockout Banner™ Pro (15 oz)	Width"	Length'
UBOP1513750		Ultrablockout Banner™ Pro (15oz)	54.0	164.0
UBOP1520350		Ultrablockout Banner™ Pro (15oz)	80.0	164.0
UBOP1525050		Ultrablockout Banner™ Pro (15oz)	98.0	164.0
UBOP1532050		Ultrablockout Banner™ Pro (15oz)	126.0	164.0

BLOCKOUT 3/4		Supersmooth Blockout (16 oz)	Width"	Length'
SSBO096530		Supersmooth Blockout (16 oz)	38.0	98.5
SSBO13730		Supersmooth Blockout (16 oz)	54.0	98.5
SSBO16030		Supersmooth Blockout (16 oz)	63.0	98.5
SSBO22030		Supersmooth Blockout (16 oz)	86.0	98.5

BLOCKOUT 4/4		DSS Blockout (13 oz)	Width"	Length'
DSS099050		DSS Blockout (13 oz)	39.0	164.0
DSS137050		DSS Blockout (13 oz)	54.0	164.0
DSS160050		DSS Blockout (13 oz)	63.0	164.0
DSS183050		DSS Blockout (13 oz)	72.0	164.0
DSS203050		DSS Blockout (13 oz)	80.0	164.0

ULTRAFLEX

SYSTEMS INCORPORATED

MESH 1/5		Ultramesh® Supreme (11 oz)	Width"	Length'
WM332050		Ultramesh® Supreme (11 oz)	126.0	164.0
WM350050		Ultramesh® Supreme (11 oz)	196.0	164.0

MESH 2/5		Ultramesh® 100 (10 oz)	Width"	Length'
MT901285280801		Ultramesh® 100 (10 oz)	126.0	164.0
MT840083401890		Ultramesh® 100 (10 oz)	196.0	164.0

MESH 3/5		Ultramesh® Xcel (7 oz)	Width"	Length'
UM18350		Ultramesh® Xcel (7 oz)	72.0	180.0
UM32050		Ultramesh® Xcel (7 oz)	126.0	180.0
UM50060		Ultramesh® Xcel (7 oz)	196.0	180.0

MESH 4/5		Strip Mesh Plus (8 oz)	Width"	Length'
SMP13750		Strip Mesh Plus (8 oz)	54.0	164.0
SMP16050		Strip Mesh Plus (8 oz)	63.0	164.0
SMP18350		Strip Mesh Plus (8 oz)	72.0	164.0
SMP20350		Strip Mesh Plus (8 oz)	80.0	164.0
SMP25050		Strip Mesh Plus (8 oz)	98.0	164.0
SMP32050		Strip Mesh Plus (8 oz)	126.0	164.0

MESH 5/5		Ultra Mesh Plus (9 oz)	Width"	Length'
UMP32050		Ultra Mesh Plus (9 oz), WO Liner	126.0	164.0
UMP50050		Ultra Mesh Plus (9 oz) WO Liner	196.0	164.0

ULTRAFLEX

SYSTEMS INCORPORATED

SPECIALTY 1/7		Artex® Canvas (9.5 oz)	Width"	Length'
AC13750		Artex® Canvas (9.5 oz)	54.0	164.0
AC16050		Artex® Canvas (9.5 oz)	63.0	164.0
AC32050		Artex® Canvas (9.5 oz)	126.0	164.0
AC50050		Artex® Canvas (9.5 oz)	196.0	164.0

SPECIALTY 2/7		Carpet	Width"	Length'
SOLCAR18025		UltraCarpet Extra	71.0	82.0
SOLCAR32025		UltraCarpet Extra	126.0	82.0
SOLCAR50025		UltraCarpet Extra	196.0	82.0
Tubes		Add on for Shipping Tubes		
Tubes		(Optional)		
Tubes		\$0.00		

SPECIALTY 4/7		Rigids	Width"	Length'
STY14-48300		UltraStyrene white 14 pt. - translucent	48.0	300.0
STY14-54300		UltraStyrene white 14 pt. - translucent	54.0	300.0
STY14-60300		UltraStyrene white 14 pt. - translucent	60.0	300.0
STY18-48300		UltraStyrene white 18 pt. - translucent	48.0	300.0
STYOP20-6300		UltraStyrene white 20 pt. - Opaque	60.0	300.0

Note: All widths are 1/8" shy of the stated width. All items are by special order, final price may vary.

SPECIALTY 5/7		Seaming Tape	Width"	Length'
Tape 1		Seaming Tape		
Tape 2		Seaming Tape		
Tape 3		Seaming Tape		

SPECIALTY 6/7		UltraVision® Window Perf.	Width"	Length'
OWV604013550		UltraVision® Window Perf.	54.0	164.0
OWV135100		UltraVision® Window Perf.	54.0	328.0

SPECIALTY 7/7		WallScapes® Wallcovering (20 oz)	Width"	Length'
46STARDUST		Wallscapes® - StarDust	56.0	300.0
46STARDUS5475FI		Wallscapes® - StarDust (Face In)	54.0	75.0
59 SUEDE		Wallscapes® - Suede	56.0	300.0
59SUEDE-5475-FI		Wallscapes® - Suede (Face In)	54.0	75.0
55Matte		Wallscapes® - Matte	56.0	300.0
55Matte-5475-FI		Wallscapes® - Matte (Face In)	54.0	75.0

ULTRAFLEX

SYSTEMS INCORPORATED

TEXTILES 1/17		UltraCanvas Artist C325	Width "	Length'
UCAC325155050	UltraCanvas Artist C325		61.0	164.0
UCAC325250050	UltraCanvas Artist C325		98.0	164.0
UCAC325310050	UltraCanvas Artist C325		122.0	164.0
UCAC325505050	UltraCanvas Artist C325		198.0	164.0

TEXTILES 2/17		UltraCanvas Backlit U280	Width "	Length'
UCBL205050	UltraCanvas BL		79.0	164.0
UCBL310050	UltraCanvas BL		122.0	164.0
UCBL505050	UltraCanvas BL		198.0	164.0

TEXTILES 3/17		UltraCanvas Economy C205	Width "	Length'
UCEC205137050	UltraCanvas Economy C205		53.0	164.0
UCEC205155050	UltraCanvas Economy C205		61.0	164.0
UCEC205205050	UltraCanvas Economy C205		79.0	164.0
UCEC205250050	UltraCanvas Economy C205		98.0	164.0
UCEC205310050	UltraCanvas Economy C205		122.0	164.0
UCEC205505050	UltraCanvas Economy C205		198.0	164.0

TEXTILES 4/17		UltraCanvas Economy U170	Width "	Length'
UCAEU170310050	UltraCanvas Economy U170		122.0	164.0
UCAEU170505050	UltraCanvas Economy U170		198.0	164.0

TEXTILES 5/17		UltraCanvas Heavy C285	Width "	Length'
UCAHC285310050	UltraCanvas Heavy C285		122.0	164.0
UCAHC285505050	UltraCanvas Heavy C285		198.0	164.0

TEXTILES 6/17		UltraCanvas Light C190	Width "	Length'
UCALC190310050	UltraCanvas Light C190		122.0	164.0
UCALC190505050	UltraCanvas Light C190		198.0	164.0

TEXTILES 7/17		UltraCotton C200	Width "	Length'
UCC370205050	UltraCotton C200		79.0	164.0
UCC370250050	UltraCotton C200		98.0	164.0
UCC370310050	UltraCotton C200		122.0	164.0
UCC370505050	UltraCotton C200		198.0	164.0

TEXTILES 8/17		UltraCotton C370	Width "	Length'
UCC370205050	UltraCotton C370		79.0	164.0
UCC370250050	UltraCotton C370		98.0	164.0
UCC370310050	UltraCotton C370		122.0	164.0
UCC370505050	UltraCotton C370		198.0	164.0

TEXTILES 9/17		UltraFlag PES C110	Width "	Length'
UFPC110310050	UltraFlag PES C110		122.0	164.0
UFPC110505050	UltraFlag PES C110		198.0	164.0

TEXTILES 10/17		UltraPoplin Crystal U170	Width "	Length'
UPCU170310050	UltraPoplin Crystal U170		122.0	164.0
UPCU170505050	UltraPoplin Crystal U170		198.0	164.0

TEXTILES 11/17		UltraPoplin PES C240	Width "	Length'
UPPC240137050	UltraPoplin PES C240		53.0	164.0
UPPC240155050	UltraPoplin PES C240		61.0	164.0
UPPC240205050	UltraPoplin PES C240		79.0	164.0
UPPC240250050	UltraPoplin PES C240		98.0	164.0
UPPC240310050	UltraPoplin PES C240		122.0	164.0
UPPC240505050	UltraPoplin PES C240		198.0	164.0

TEXTILES 12/17		UltraPoplin Pro U180	Width "	Length'
UPPU180155050	UltraPoplin Pro U180		61.0	164.0
UPPU180250050	UltraPoplin Pro U180		98.0	164.0
UPPU180310050	UltraPoplin Pro U180		122.0	164.0

TEXTILES 15/17		UltraTex Organic C265	Width "	Length'
UTOOC265155050	UltraTex Organic C265		61.0	164.0
UTOOC265205050	UltraTex Organic C265		79.0	164.0
UTOOC265250050	UltraTex Organic C265		98.0	164.0
UTOOC230310050	UltraTex Organic C265		122.0	164.0
UTOOC230505050	UltraTex Organic C265		198.0	164.0

TEXTILES 16/17		UltraTex Organic U230	Width "	Length'
UTOU230155050	UltraTex Organic U230		61.0	164.0
UTOU230310050	UltraTex Organic U230		122.0	164.0
UTOU230505050	UltraTex Organic U230		198.0	164.0

TEXTILES 17/17		Ultratex Trevira U300	Width "	Length'
UTCU300205050	Ultratex Trevira U300		79.0	164.0
UTCU300310050	Ultratex Trevira U300		122.0	164.0
UTCU300505050	Ultratex Trevira U300		198.0	164.0

**Solvent Inks - Agfa, HP, Seiko
& Roland****HP Designjet 9000s/10000 Printer Series - 790**

Part Number	Color	Size
CB271A	Black	1 liter
CB272A	Cyan	1 liter
CB273A	Magenta	1 liter
CB274A	Yellow	1 liter
CB275A	Light Cyan	1 liter
CB276A	Light Magenta	1 liter

HP Designjet 9000s/10000 Printer Series - 791

Part Number	Color	Size
CC663A	Black	1 liter
CC664A	Cyan	1 liter
CC665A	Magenta	1 liter
CC666A	Yellow	1 liter
CC667A	Light Cyan	1 liter
CC668A	Light Magenta	1 liter

Seiko 64S/100 ColorPainter

Part Number	Color	Size
IP6-101	Yellow	1 liter
IP6-102	Magenta	1 liter
IP6-103	Cyan	1 liter
IP6-104	Black	1 liter
IP6-105	Lt Cyan	1 liter
IP6-106	Lt Magenta	1 liter

Seiko V-64S ColorPainter

Part Number	Color	Size
IP5-201	Yellow	500 ml
IP5-202	Magenta	500 ml
IP5-203	Cyan	500 ml
IP5-204	Black	500 ml
IP5-205	Lt Cyan	500 ml
IP5-206	Lt Magenta	500 ml

Seiko H-series ColorPainter

Part Number	Color	Size
IP7-101	Yellow	1 liter
IP7-102	Magenta	1 liter
IP7-103	Cyan	1 liter
IP7-104	Black	1 liter

Alpha**Imaging
Technologies**The Experts in Wide-Format Printing
www.alphaimaging.com

Part Number	Color	Size
E7NHM000	ANAPURNA M INK LITE CYAN	1 liter
E7NDD000	ANAPURNA M INK CYAN 2X1L	1 liter
E7NJO000	ANAPURNA M INK LITE MAGENTA	1 liter
E7NEF000	ANAPURNA M INK MAGENTA 2X1L	1 liter
E7NFB000	ANAPURNA M INK YELLOW 2X1L	1 liter
E7NGK000	ANAPURNA M INK BLACK 2X1L	1 liter
E7NKQ000	ANAPURNA M FLUSHING	1 liter
E8G7L000	ANAPURNA L/XL/XL2 WHITE G2	1 liter



Part Number	Color	Size
ESL3-BK	Black Cartridge	220 ml
ESL3-CY	Cyan Cartridge	220 ml
ESL3-MG	Magenta Cartridge	220 ml
ESL3-YE	Yellow Cartridge	220 ml
ESL3-LC	Light Cyan Cartridge	220 ml
ESL3-LM	Light Magenta Cartridge	220 ml

Part Number	Color	Size
ESL3-4 BK	Black Cartridge	440 ml
ESL3-4 CY	Cyan Cartridge	440 ml
ESL3-4 MG	Magenta Cartridge	440 ml
ESL3-4 YE	Yellow Cartridge	440 ml
ESL3-4 LC	Light Cyan Cartridge	440 ml
ESL3-4 LM	Light Magenta Cartridge	440 ml

ColorPan Solvent Inks**SolaChrome-HR Solvent Ink**

To be used In ColorSpan 72S, 72SR, 98SX Printers.



Part Number	Color	Size
CH141A	Cyan	2 liters
CH142A	Magenta	2 liters
CH143A	Yellow	2 liters
CH144A	Black	2 liters
CH145A	PHD Flush Solution	3 liters

SolaChrome-HR Solvent Ink

To be used In ColorSpan 72SI and 98SI Printers.



Part Number	Color	Size
CH146A	Cyan	3 liters
CH147A	Magenta	3 liters
CH148A	Yellow	3 liters
CH149A	Black	3 liters
CH150A	PHD Flush Solution	3 liters

SolaChrome-UV Solvent Ink

For use in ColorSpan UVR and UVX printers



Part Number	Color	Size
CH135A	Cyan	3 liters
CH136A	Magenta	3 liters
CH137A	Yellow	3 liters
CH138A	Black	3 liters
CH140A	PHD Flush Solution	3 liters

5400 UV Series Inks

Part Number	Color	Size
CH116A	Cyan	1-liter
CH117A	Magenta	1-liter
CH118A	Yellow	1-liter
CH119A	Black	1-liter
CH120A	Light Cyan	1-liter
CH121A	Light Magenta	1-liter
CH122A	Printhead Flush	1-liter



L65500 Printer

Part Number	Description	Size
CC582A	HP 786 Yellow/Magenta Designjet Printhead	
CC583A	HP 786 Cyan/Black Designjet Printhead	
CC584A	HP 786 Lt Magenta/Lt Cyan Designjet Printhead	
CC585A	HP 786 Black Latex Design jet Ink Cartridge	3-liter
CC586A	HP 786 Cyan Latex Design jet Ink Cartridge	3-liter
CC587A	HP 786 Magenta Latex Design jet Ink Cartridge	3-liter
CC588A	HP 786 Yellow Latex Designjet Ink Cartridge	3-liter
CC589A	HP 786 Lt Cyan Latex Design jet Ink Cartridge	3-liter
CC590A	HP 786 Lt Magenta Latex Design jet Ink Cartridge	3-liter
CC591A	HP 786 Designjet Maintenance Kit	

L25500 Printer

Part Number	Description	Size
CH612A	HP 789 Yellow/Black Designjet Printhead	
CH613A	HP 789 Cyan/Light cyan Designjet Printhead	
CH614A	HP 789 Light Magenta/Magenta Designjet Printhead	
CH615A	HP 789 775-ml Black Latex Designjet Ink Cartridge	775 ml
CH616A	HP 789 775-ml Cyan Latex Designjet Ink Cartridge	775 ml
CH617A	HP 789 775-ml Magenta Latex Designjet Ink Cartridge	775 ml
CH618A	HP 789 775-ml Yellow Latex Designjet Ink Cartridge	775 ml
CH619A	HP 789 775-ml Light Cyan Latex Designjet Ink Cartridge	775 ml
CH620A	HP 789 775-ml Light Magenta Latex Designjet Ink Cartridge	775 ml
CH621A	HP 789 Designjet Printhead Cleaning Kit	
CH622A	HP 789 Designjet Printhead Cleaning Container	

HP Latex Paper

Part Number	Description	Width"	Length"
CG409A	Hp Outdoor Frontlit Scrim Banner	42	115
CG410A	Hp Outdoor Frontlit Scrim Banner	54	115
CG414A	HP HDPE Reinforced Banner	36	150
CG415A	HP HDPE Reinforced Banner	42	150
CG416A	HP HDPE Reinforced Banner	60	150
CG439A	HP Durable Frontlit Scrim Banner	42	115
CG440A	HP Durable Frontlit Scrim Banner	54	115
CG448A	HP Backlit Scrim Banner	42	82
CG449A	HP Backlit Scrim Banner	54	82
CG423A	HP Permanent Gloss Adhesive Vinyl	42	150
CG424A	HP Permanent Gloss Adhesive Vinyl	54	150
CG425A	HP Permanent Gloss Adhesive Vinyl	60	150
CG426A	HP Permanent Gloss Adhesive Vinyl	60	300
CG453A	HP Permanent Matte Ahesive Vinyl	42	150
CG454A	HP Permanent Matte Ahesive Vinyl	54	150
CG455A	HP Permanent Matte Ahesive Vinyl	60	150
CG456A	HP Permanent Matte Ahesive Vinyl	60	300
Q8684AE	HP Premium Backlit Film	36	65
Q8685AE	HP Premium Backlit Film	54	65
CG435A	HP Heavy Textile Banner	38	130
CG427A	HP Wrinkle-Free Flag With Liner	38	130
CG419A	HP Photo-Realistic Poster Paper	36	200
CG420A	HP Photo-Realistic Poster Paper	54	200
CG421A	HP Photo-Realistic Poster Paper	60	200
CG502A	HP Blue Back Billboard Paper	54	262
CG431A	Hp Mesh Banner Wilth Liner	42	82
CG444A	HP Dupont Tyvek Banner	36	100
CG445A	HP Dupont Tyvek Banner	42	100
CG446A	HP Dupont Tyvek Banner	60	150
Q8838AE	HP Satin Canvas	36	49
Q8783AE	HP Satin Canvas	54	49
Q8833AE	HP Satin Canvas	60	49



xcel products, inc.

Magnetic Vinyl

Item	Description
MAJW15-24	.015 White Matte Magnet - 24.375" - FT (150 ft.roll) *Limited Availability
MAMMW20-24.375	.020 White Matte Magnet - 24.375" - FT (100 ft roll)
MAJW20-39.5	.020 White Matte Magnet - 39.5" - FT (50 ft/roll)
MAMMW30-24.375	.030 White Matte Magnet - 24.375" - FT (50 ft roll)
MAJW30-39.5	.030 White Matte Magnet - 39.5" - FT (50 ft/roll)
MAMI30-24XBPSA	.030 24.375" x 50' Invisilock Magnet w/XBond adhesive
MAMMP40-24	.040 Invisilock™ Double Magnetized (Multi-Poles) - 24" (50' roll)
MRMAWP-GAL	Active Wall Primer - 1 gallon (graphite)
MAMMP40-24	.040 Invisilock™ Double Magnetized (Multi-Poles) - 24" (50' roll)

Visual Magnetics

Item	Description	width "	length '
VMPOLYmatt	VM-POLYmatte Visual Magnetics™ Graphic System	60	75
VMPOLYmatt	VM-POLYmatte Visual Magnetics™ Graphic System	60	150
VMPE	VM-POLYeight Visual Magnetics™ Graphic System	54	150
VMPE	VM-POLYeight Visual Magnetics™ Graphic System'	37	150
VMPF	VM-POLYfive Visual Magnetics™ Graphic System	54	150
VMSYNpaper	VM-SYNpaper Visual Magnetics™ Graphic System	60	150
VMDE	VM-Dry Erase Visual Magnetics™ Graphic System	48	50
VMCBK-50	VM-Write-on Chalk Black	50	50
VMCBL-44	VM-Write-on Chalk Blue	44	50
VMCRO-44	VM-Write-on Chalk Rose	44	50
VMCGR-44	VM-Write-on Chalk Green/Melon	44	50
VMCPU-44	VM-Write-on Chalk Purple	44	50



RIO 12 oz. Opaque Ultra Smooth Matte 2-side banner

	Width "	Length '
* BRIOUS1238	38	165
* BRIOUS1254	54	165
* BRIOUS1263	63	165
* BRIOUS1272	72	165
* BRIOUS1280	80	165
BRIOUS1298	98	165
BRIOUS12102	102	165
BRIOUS12126	126	165

RIO 13 oz. FR Semi-Matte/Gloss banner

YRIO840MFR1338	38	165
YRIO840GFR1338	38	165
YRIO840MFR1354	54	165
YRIO840GFR1354	54	165
YRIO840MFR1363	63	165
YRIO840GFR1363	63	165
YRIO840MFR1372	72	165
YRIO840MFR1380	80	165
YRIO840MFR1398	98	165
YRIO840GFR1398	98	165
YRIO840MFR13126	126	165



Alpha Imaging Conditions of Sale

Minimum Order - None - we're here to keep your company printing and will happily process all of your orders, regardless of size!

Drop Shipments - Based on the specific manufacturer.

Prices - Prices are subject to change by individual manufacturers. Extra charges for inside delivery, lift gate etc. will be billed accordingly.

Sales Tax - State laws require Alpha to have in our possession a valid tax exemption certificate if the customer requests tax exemption.

Terms - Net 30 Days.

Freight - All prices are F.O.B. point of shipment.

Returned Merchandise - Returned goods will handled on a case-by-case basis.

Claims - Immediate action must be taken if merchandise is lost or received damaged. Please refuse merchandise if damage is noted upon delivery or contact Alpha immediately once damage to merchandise is noted.

Alpha Imaging Technologies Media Warranty

100% Quality Guarantee - If you receive a product that does not meet our stringent quality specifications, we will replace it with an identical or comparable product or offer credit for product returned. Alpha provides this guarantee as evidence of the consistent and superior performance of any product sold to our clients by our company. Product replacement is limited to media and/or ink purchased from Alpha.